

Catalog Number: IR122-312

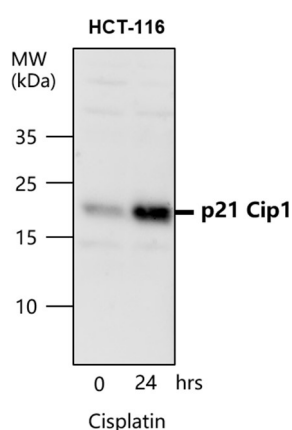
Anti-p21 Cip1 antibody

Package size: 25, 100 μ l
Store at: -20°C
MW (kDa): 21

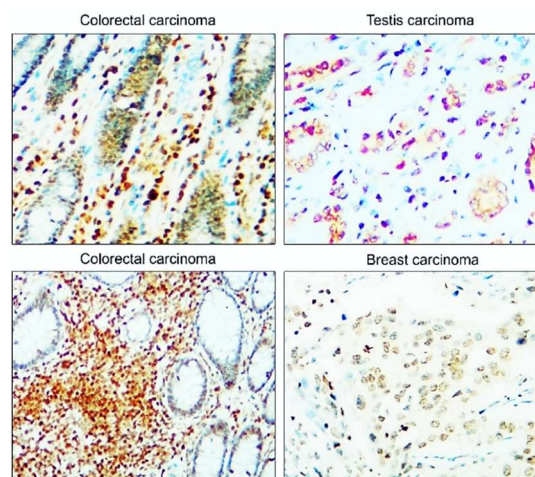
Overview

Product Name	p21 Cip1 antibody
Product Number	IR122-312
Gene Description	cyclin-dependent kinase inhibitor 1A (p21, Cip1)
Clonality	Polyclonal
Host	Rabbit
Species Reactivity	Human, mouse, rat
Recommended Applications Dilutions	Western Blot 1:500 – 1:1000 Immunofluorescence 1:200 – 1:400 Immunohistochemistry (Paraffin) 1:100 – 1:200
Storage Buffer	100mM Tris Glycine, 1% BSA, 20% Glycerol (pH7). 0.025% ProClin 300 was added as a preservative
Concentration	0.3 mg/ml
Purity	Affinity column purified
Storage	Store at +4°C for short term storage. Long time storage is recommended at -20°C
Notes	Gently mix before use. Optimal concentrations and conditions for each application should be determined by the user.

IR122-312 anti-p21 Cip1 antibody WB image



IR122-312 anti-p21 Cip1 antibody IHC image



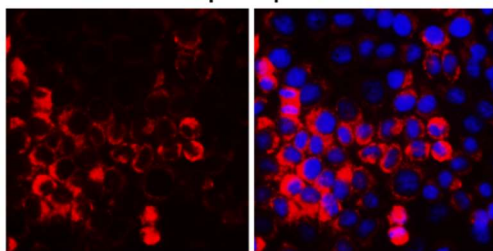
p21 Cip1 antibody at 1/500 dilution

Lysates at 30 μ g per lane. This blot was produced using a 12% SDS-PAGE. Nitrocellulose membrane was then blocked with 3% BSA for an hour before being incubated with IR122-312 overnight at 4°C.

Immunohistochemical analysis of paraffin embedded Human cancer tissue labeling p21 Cip1 with IR122-312 at 1/100.

Image

p21 Cip1



IR122-312 anti-p21 Cip1 antibody ICC/IF image

Immunofluorescence: cells were fixed with 4% paraformaldehyde for 10 min at RT, permeabilized with 0.1% NP-40 for 10 min at RT then blocked with 5% BSA for 30 min at room temperature. Cells were stained with IR122-312 anti- p21 Cip1 antibody (red) at 1:400 and 4°C. DAPI (blue) was used as the nuclear counter stain.

IReal Biotechnology Co., Ltd.

 **iReal Antibodies**



**ISO 13485:2016 Quality
Management System
Certified**

 www.irealbio.com

 03-5260005

 irealbio@irealbio.com