

For Research Use Only. Not For Use In Diagnostic Procedures.

Products Included	Catalog No.	Quantity	Isotype	Application
Cytokeratin 5/6 antibody	IR226-865	25 µl	Rabbit IgG	WB, IF, IHC
Cytokeratin 7 antibody	IR228-868	25 µl	Rabbit IgG	WB, IF, IHC
Cytokeratin 8 antibody	IR229-871	25 µl	Rabbit IgG	WB, IF, IHC
Pan-Cytokeratin antibody	IR222-861	25 µl	Rabbit IgG	WB, IF, IHC
Cytokeratin 18/19 antibody	IR236-890	25 µl	Rabbit IgG	WB, IF, IHC

See [www.irealbio.com](http://www.irealbio.com) for individual component applications, species cross-reactivity, dilutions.

**Recommended  
 Antibody Dilutions**

Western Blot 1:2000 - 1:3000  
 Immunochemistry 1:200 - 1:400  
 Please visit [www.irealbio.com](http://www.irealbio.com) for validation data and a complete listing of recommended companion products.

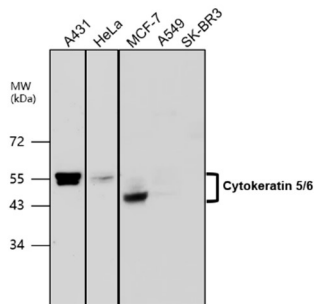
**Storage Buffer**

100mM Tris Glycine, 20% Glycerol (pH7). 0.025% ProClin 300 was added as a preservative

**Storage / Notes**

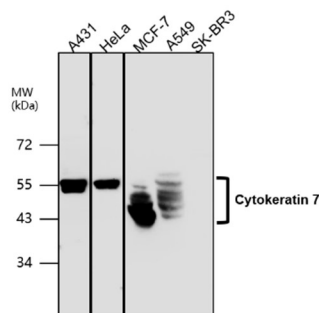
Store at -20°C. Do not aliquot the antibodies. Gently mix before use. Optimal concentrations and conditions for each application should be determined by the user.

**Cytokeratin 5/6 antibody**



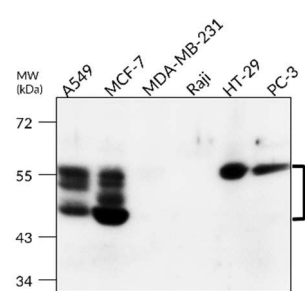
Western blot analysis of cell extracts using Cytokeratin 5/6 IR226-865 at 1/2000 dilution.

**Cytokeratin 7 antibody**



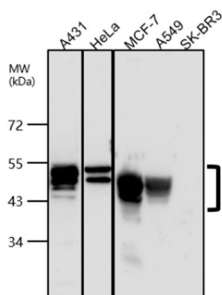
Western blot analysis of cell extracts using Cytokeratin 7 IR228-868 at 1/2000 dilution.

**Cytokeratin 8 antibody**



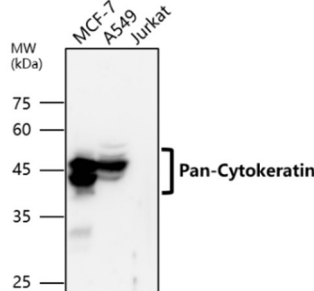
Western blot analysis of cell extracts using Cytokeratin 8 IR229-871 at 1/2000 dilution.

**Cytokeratin 18/19 antibody**



Western blot analysis of cell extracts using Cytokeratin 18/19 IR236-890 at 1/3000 dilution.

**Pan-Cytokeratin antibody**



Western blot analysis of cell extracts using Pan-Cytokeratin IR222-861 at 1/3000 dilution.

**iReal Biotechnology**

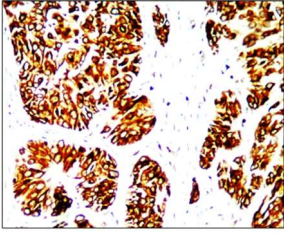
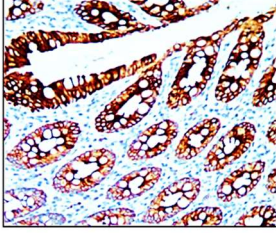
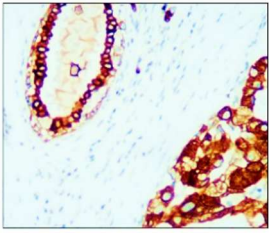
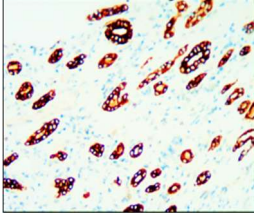
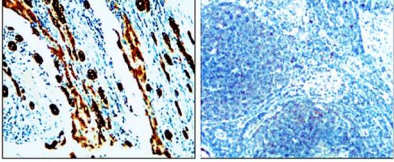
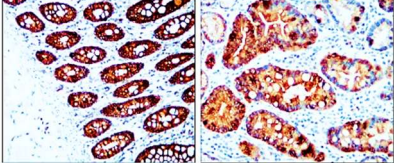


ISO 13485:2016 Quality Management System Certified



[irealbio@irealbio.com](mailto:irealbio@irealbio.com)

[www.irealbio.com](http://www.irealbio.com)



Cytokeratin 5/6 antibody	Cytokeratin 7 antibody	Cytokeratin 8 antibody
<p data-bbox="261 248 399 271">Breast carcinoma</p> 	<p data-bbox="727 248 890 271">Colorectal carcinoma</p> 	<p data-bbox="1251 248 1414 271">Breast carcinoma</p> 
<p data-bbox="121 611 528 701">Immunohistochemical analysis of paraffin embedded Human cancer tissue labeling Cytokeratin 5/6 with IR226-865 at 1/200.</p>	<p data-bbox="584 611 991 701">Immunohistochemical analysis of paraffin embedded Human cancer tissue labeling Cytokeratin 7 with IR228-868 at 1/200.</p>	<p data-bbox="1091 611 1498 701">Immunohistochemical analysis of paraffin embedded Human cancer tissue labeling Cytokeratin 8 with IR229-871 at 1/200.</p>
Cytokeratin 18/19 antibody	Pan-Cytokeratin antibody	
<p data-bbox="268 920 386 943">Breast carcinoma</p> 	<p data-bbox="678 864 770 887">Liver carcinoma</p> <p data-bbox="858 864 991 887">Lymph node carcinoma</p>  <p data-bbox="667 1048 788 1070">Colorectal carcinoma</p> <p data-bbox="874 1048 979 1070">Gastric carcinoma</p> 	<p data-bbox="1091 920 1498 972"><b>iReal Biotechnology</b></p> <p data-bbox="1091 1025 1406 1122">ISO 13485:2016 Quality Management System Certified</p> <p data-bbox="1107 1151 1410 1182">✉ <a href="mailto:irealbio@irealbio.com">irealbio@irealbio.com</a></p> <p data-bbox="1107 1205 1410 1236">🔍 <a href="http://www.irealbio.com">www.irealbio.com</a></p>  
<p data-bbox="121 1305 528 1395">Immunohistochemical analysis of paraffin embedded Human cancer tissue labeling Cytokeratin 18/19 with IR236-890 at 1/200.</p>	<p data-bbox="584 1305 991 1395">Immunohistochemical analysis of paraffin embedded Human cancer tissue labeling Pan-Cytokeratin with IR222-861 at 1/400.</p>	