

Catalog Number: IR353-1

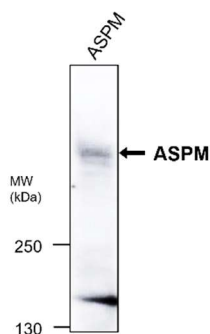
Anti-ASPM antibody (isoform1 specific)

Package size: 25 , 100 μ l
Store at: -20°C
MW (kDa): 410

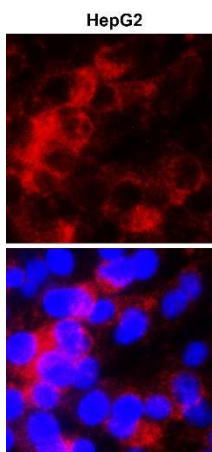
Overview

Product Name	ASPM antibody (isoform1 specific)
Product Number	IR353-1
Gene Description	Abnormal spindle-like microcephaly-associated protein
Clonality	Polyclonal
Host	Rabbit
Species Reactivity	Human, Mouse, Rat
Recommended Applications Dilutions	Western Blot 1:500 Immunofluorescence 1:100 – 1:300 Immunohistochemistry (Paraffin) 1:50 – 1:100
Storage Buffer	100mM Tris Glycine, 20% Glycerol (pH7). 0.025% ProClin 300 was added as a preservative
Concentration	1.51 mg/ml
Purity	Affinity column purified
Storage	Store at +4°C for short term storage. Long time storage is recommended at -20°C
Notes	Gently mix before use. Optimal concentrations and conditions for each application should be determined by the user.

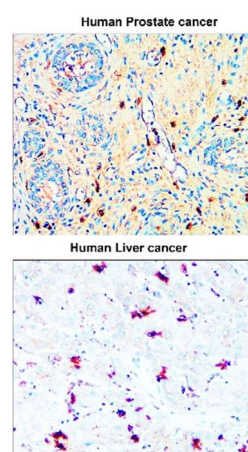
IR353-1 anti-ASPM antibody
WB image



IR353-1 anti-ASPM antibody
ICC image



IR353-1 anti-ASPM antibody
IHC image



Anti-ASPM antibody at 1/500 dilution.
Lysates at 40 μ g per lane. This blot was produced using a 5% SDS-PAGE. NC membrane was then blocked an hour before being incubated with IR353-1 overnight at 4°C.

Cells were fixed with 4% PFA for 10 min at RT, permeabilized with 0.1% NP-40 for 10 min at RT then blocked with 5% BSA for 30 min at RT. Cells were stained with IR353-1 anti-ASPM antibody (red) at 1:200 and 4°C.

Immunohistochemical analysis of paraffin embedded Human cancer tissue labeling ASPM with IR353-1 at 1/100.

