

Catalog Number: IR221-860

## Anti-MUC1 antibody (extracellular)

Package size: 25, 100  $\mu$ l

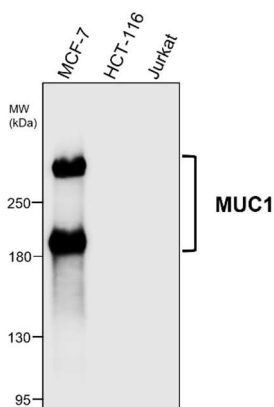
Store at: -20°C

MW (kDa): 200-300

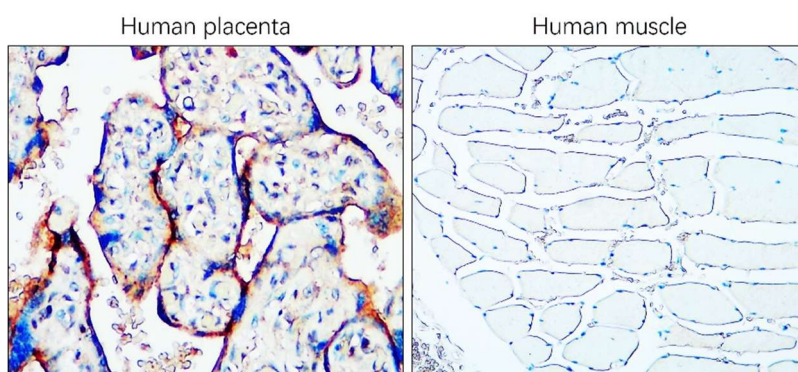
### Overview

<b>Product Name</b>	<b>MUC1 antibody</b>
<b>Product Number</b>	<b>IR221-860</b>
<b>Clonality</b>	Polyclonal
<b>Host</b>	Rabbit
<b>Species Reactivity</b>	Human
<b>Recommended Applications Dilutions</b>	Western Blot 1:500 - 1:1000 Immunofluorescence 1:100 - 1:400 Immunohistochemistry (Paraffin) 1:100
<b>Storage Buffer</b>	100mM Tris Glycine, 20% Glycerol (pH7). 0.025% ProClin 300 was added as a preservative
<b>Concentration</b>	0.45 mg/ml
<b>Purity</b>	Affinity column purified
<b>Storage</b>	Store at +4°C for short term storage. Long time storage is recommended at -20°C
<b>Notes</b>	Gently mix before use. Optimal concentrations and conditions for each application should be determined by the user.

### IR221-860 anti-MUC1 antibody WB image



### IR221-860 anti-MUC1 antibody IHC image

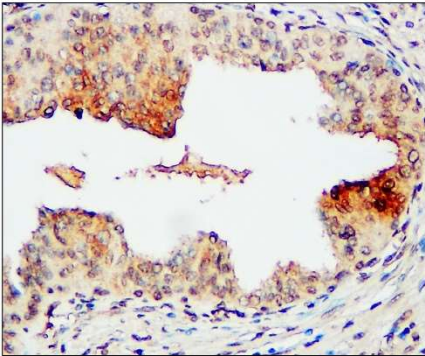


**Anti-MUC1 antibody - at 1/700 dilution**  
Lysates at 35  $\mu$ g per lane. This blot was produced using a 5% SDS-PAGE. Nitrocellulose membrane was then blocked for an hour before being incubated with IR221-860 overnight at 4°C.

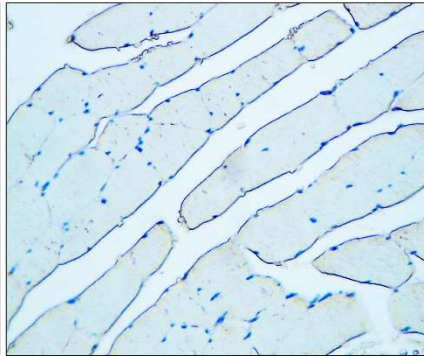
Immunohistochemical analysis of paraffin embedded Human muscle and placenta tissue labeling MUC1 antibody with IR221-860 at 1/100.

## IR221-860 anti-MUC1 antibody IHC image

Human colorectal adenocarcinoma

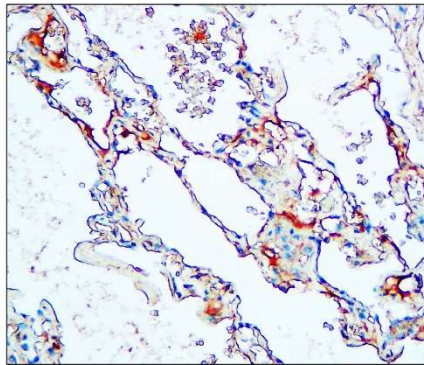
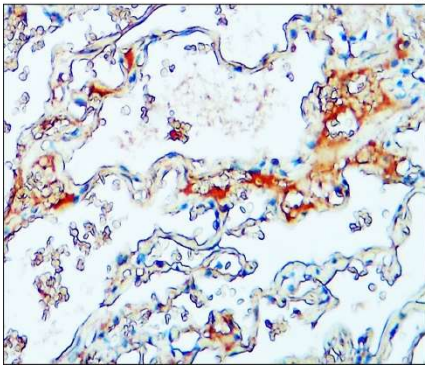


Human muscle



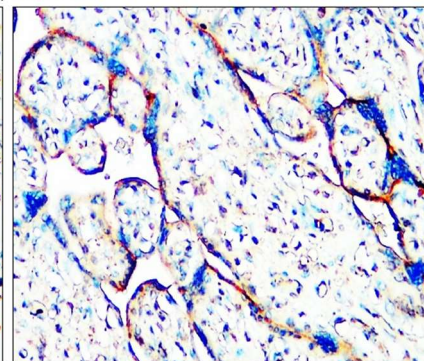
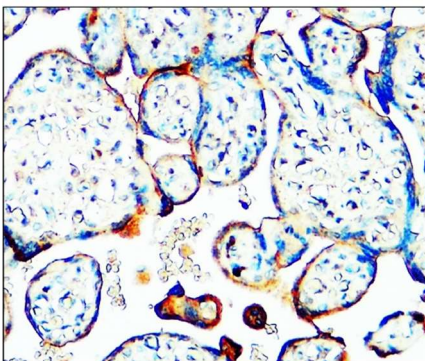
Immunohistochemical analysis of paraffin embedded Human colorectal adenocarcinoma and muscle tissue labeling MUC1 antibody with IR221-860 at 1/100.

human lung carcinoma



Immunohistochemical analysis of paraffin embedded Human lung Carcinoma tissue labeling MUC1 antibody with IR221-860 at 1/100.

Human placenta



Immunohistochemical analysis of paraffin embedded Human placenta tissue labeling MUC1 antibody with IR221-860 at 1/100.

