

Catalog Number: IR71-245

## Anti MMP14 / MT1-MMP antibody

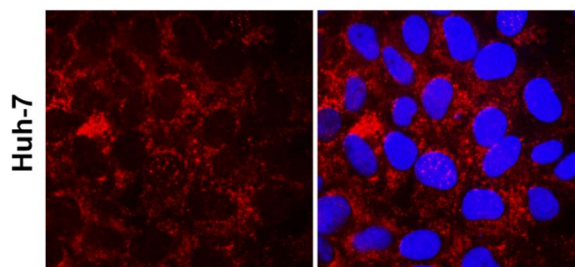
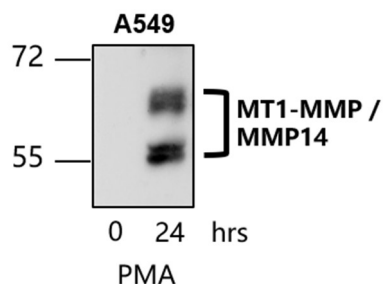
Package size: 25,100  $\mu$ l  
Store at: -20°C  
MW (kDa): 50-62

### Overview

<b>Product Name</b>	<b>MMP14 / MT1-MMP antibody</b>
<b>Product Number</b>	<b>IR71-245</b>
<b>Gene Description</b>	matrix metalloproteinase 14 (membrane-inserted)
<b>Clonality</b>	Polyclonal
<b>Host</b>	Rabbit
<b>Species Reactivity</b>	Human, mouse, rat
<b>Recommended Applications Dilutions</b>	Western Blot 1:500 Immunofluorescence 1:150 – 1:300 Immunohistochemistry (Paraffin) 1:100 – 1:200
<b>Storage Buffer</b>	100mM Tris Glycine, 20% Glycerol (pH7). 0.025% ProClin 300 was added as a preservative
<b>Concentration</b>	0.91 mg/ml
<b>Purity</b>	Affinity column purified
<b>Storage</b>	Store at +4°C for short term storage. Long time storage is recommended at -20°C
<b>Notes</b>	Gently mix before use. Optimal concentrations and conditions for each application should be determined by the user.

#### IR71-245 anti-MMP14 / MT1-MMP antibody WB image

#### IR71-245 anti-MMP14 / MT1-MMP antibody ICC/IF image

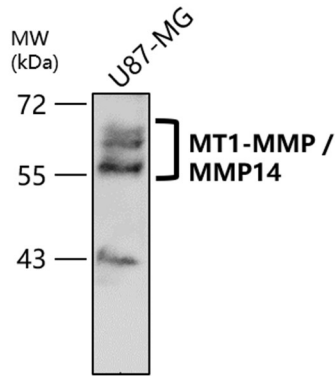


#### Anti-MMP14 / MT1-MMP antibody - at 1/500 dilution

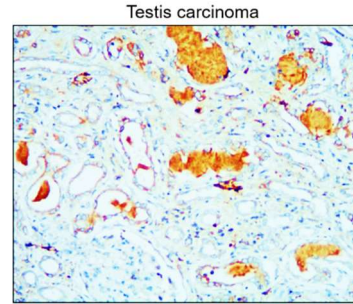
Lysates at 30  $\mu$ g per lane. This blot was produced using a 7.5% SDS-PAGE. Nitrocellulose membrane was then blocked with 3% BSA for an hour before being incubated with IR71-245 overnight at 4°C.

Immunofluorescence: cells were fixed with 4% paraformaldehyde for 10 min at RT, permeabilized with 0.1% NP-40 for 10 min at RT then blocked with 5% BSA for 30 min at room temperature. Cells were stained with IR71-245 anti-MMP14 / MT1-MMP antibody (red) at 1:150 and 4°C. DAPI (blue) was used as the nuclear counter stain.

IR71-245 anti-MMP14 / MT1-MMP antibody WB image



IR71-245 anti-MMP14 / MT1-MMP antibody IHC image

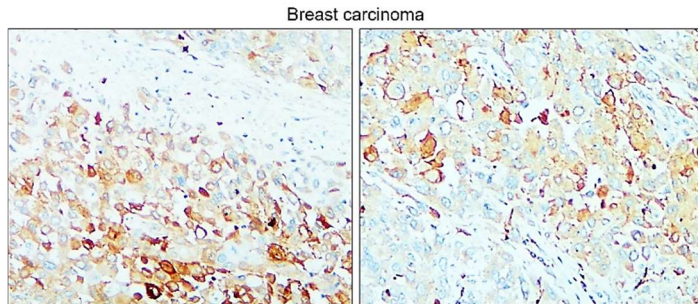


**Anti-MMP14 / MT1-MMP antibody - at 1/500 dilution**

Lysates at 30 µg per lane. This blot was produced using a 7.5% SDS-PAGE. Nitrocellulose membrane a was then blocked with 3% BSA for an hour before being incubated with IR71-245 overnight at 4°C.

Immunohistochemical analysis of paraffin embedded Human cancer tissue labeling MMP14 / MT1-MMP with IR71-245 at 1/100.

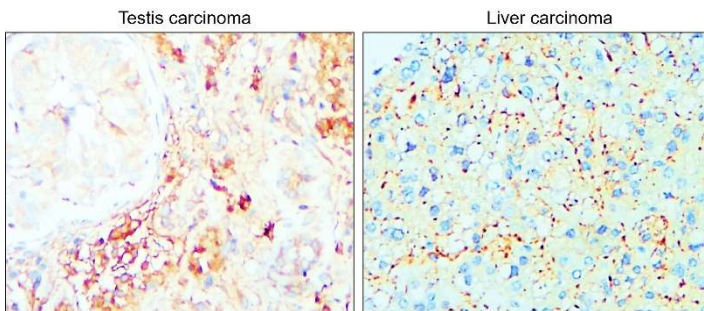
**Customer feedback Image**



IR71-245 anti-MMP14 / MT1-MMP antibody IHC image

Immunohistochemical analysis of paraffin embedded Human cancer tissue labeling MMP14 / MT1-MMP with IR71-245 at 1/100.

**Customer feedback Image**



IR71-245 anti-MMP14 / MT1-MMP antibody IHC image

Immunohistochemical analysis of paraffin embedded Human cancer tissue labeling MMP14 / MT1-MMP with IR71-245 at 1/100.

IReal Biotechnology Co., Ltd.