

Catalog Number: IR8-23

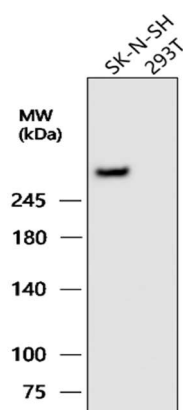
Anti-Nestin / NES antibody

Package size: 25, 100 μ l
 Store at: -20°C
 MW (kDa): 260

Overview

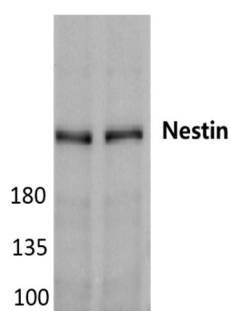
Product Name	Nestin / NES antibody
Product Number	IR8-23
Gene Description	nestin
Clonality	Polyclonal
Host	Rabbit
Species Reactivity	Human, mouse, rat
Recommended Applications Dilutions	Western Blot 1:500 – 1:1000 Immunofluorescence 1:200 – 1:500 Immunohistochemistry (Paraffin) 1:100 – 1:200
Storage Buffer	100mM Tris Glycine, 1% BSA, 20% Glycerol (pH7). 0.025% ProClin 300 was added as a preservative
Concentration	0.35 mg/ml
Purity	Affinity column purified
Storage	Store at +4°C for short term storage. Long time storage is recommended at -20°C
Notes	Gently mix before use. Optimal concentrations and conditions for each application should be determined by the user.

IR8-23 anti-Nestin antibody WB image

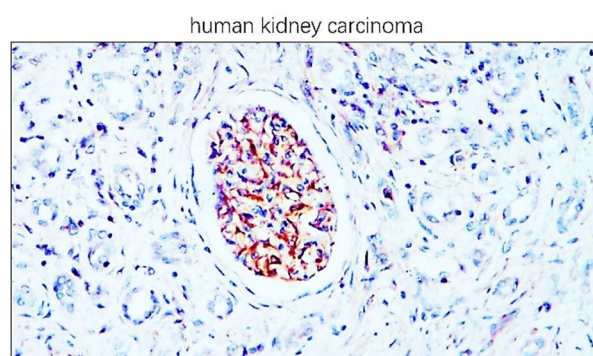


IR8-23 anti-Nestin antibody WB image

Customer feedback Image



IR8-23 anti-Nestin antibody IHC image

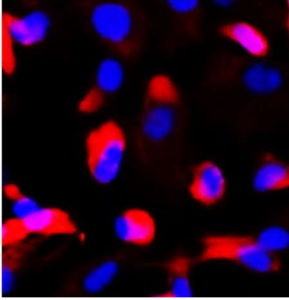


Anti-Nestin antibody at 1/1000 dilution
 Lysates at 30 μ g per lane.

Sample : Neuron 2A
 Nestin antibody (IR8-23) : 1-1000
 Data from : Taipei Medical University

Immunohistochemical analysis of paraffin embedded Human cancer tissue labeling Nestin with IR8-23 at 1/100.

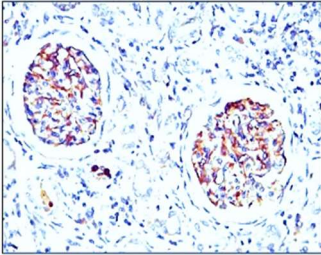
IR8-23 anti-Nestin antibody ICC/IF image



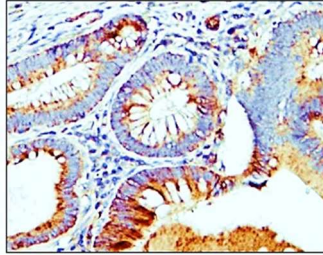
Immunofluorescence: cells were fixed with 4% paraformaldehyde for 10 min at RT, permeabilized with 0.1% NP-40 for 10 min at RT then blocked with 5% BSA for 30 min at room temperature. Cells were stained with IR8-23 anti-Nestin antibody (red) at 1:200 and 4°C. DAPI (blue) was used as the nuclear counter stain.

IR8-23 anti-Nestin antibody IHC image

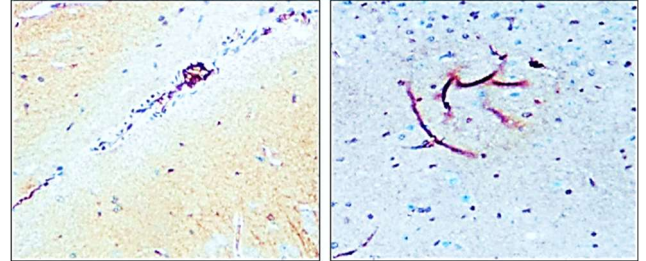
Kidney carcinoma



Colorectal carcinoma



Human brain



Immunohistochemical analysis of paraffin embedded Human cancer tissue labeling Nestin with IR8-23 at 1/100.

IReal Biotechnology Co., Ltd.



**ISO 13485:2016 Quality
Management System
Certified**

www.irealbio.com

03-5260005

irealbio@irealbio.com