

Catalog Number: IR7-21

Anti-NOTCH1 antibody

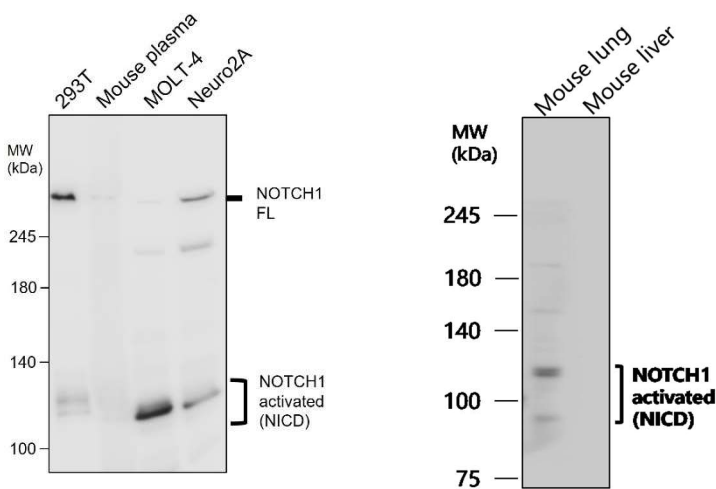
Package size: 25, 100 μ l
Store at: -20°C
MW (kDa): 300, 100-140

Overview

Product Name	NOTCH1 antibody
Product Number	IR7-21
Gene Description	notch 1
Clonality	Polyclonal
Host	Rabbit
Species Reactivity	Human, mouse, rat
Recommended Applications Dilutions	Western Blot 1:500 Immunofluorescence 1:200 – 1:500
Storage Buffer	100mM Tris Glycine, 1% BSA, 20% Glycerol (pH7). 0.025% ProClin 300 was added as a preservative
Concentration	0.28 mg/ml
Purity	Affinity column purified
Storage	Store at +4°C for short term storage. Long time storage is recommended at -20°C
Notes	Gently mix before use. Optimal concentrations and conditions for each application should be determined by the user.

Image

IR7-21 anti-NOTCH1 antibody WB image

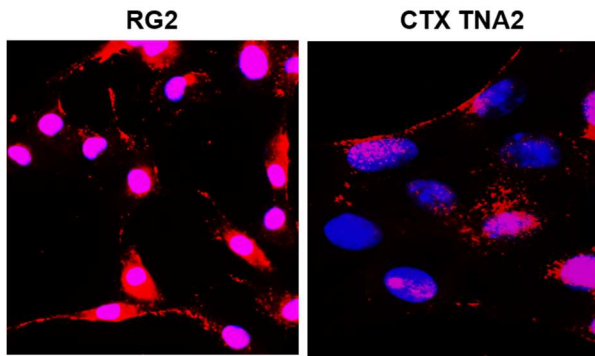


All lanes : Anti-NOTCH1 antibody at 1/700 dilution

Lysates/proteins at 30 μ g per lane
This blot was produced using a 5% SDS-PAGE.
The gel was run at 140V for 50 minutes before being transferred onto a Nitrocellulose membrane at 18V for 60 minutes. The membrane was then blocked for an hour before being incubated with IR7-21 overnight at 4°C.

Image

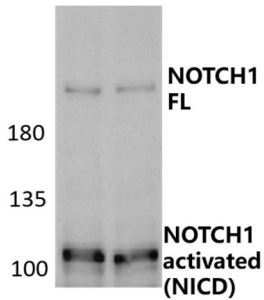
IR7-21 anti-NOTCH1 antibody ICC/IF image



Immunofluorescence: cells were fixed with 4% paraformaldehyde for 10 min at RT, permeabilized with 0.1% NP-40 for 10 min at RT then blocked with 5% BSA for 30 min at room temperature. Cells were stained with IR7-21 anti-NOTCH1 antibody (red) at 1:200 and 4°C. DAPI (blue) was used as the nuclear counter stain.

Customer feedback Image

IR7-21 anti-NOTCH1 antibody WB image



Sample : Neuron 2A
NOTCH1 (IR7-21) : 1-1000
Data from : Taipei Medical University

IReal Biotechnology Co., Ltd.

 **iReal Antibodies**



**ISO 13485:2016 Quality
Management System
Certified**

 www.irealbio.com

 03-5260005

 irealbio@irealbio.com