

For Research Use Only. Not For Use In Diagnostic Procedures.

Products Included	Catalog No.	Quantity	Isotype	Application
HIF1 alpha antibody	IR113-466	25 µl	Rabbit IgG	WB, IF, IHC
VEGF antibody	IR108-442	25 µl	Rabbit IgG	WB, IF, IHC, IP
VEGFR2 / KDR antibody	IR81-279	25 µl	Rabbit IgG	WB, IF, IHC
CD31 (Human specific) antibody	IR75-254	25 µl	Rabbit IgG	WB, IF, IHC
α-Smooth Muscle Actin antibody	IR47-146	25 µl	Rabbit IgG	WB, IF, IHC

See www.irealbio.com for individual component applications, species cross-reactivity, dilutions.

**Recommended Antibody Dilutions**

Western Blot 1:500 - 1:1000  
 Immunochemistry 1:100 - 1:200  
 Please visit www.irealbio.com for validation data and a complete listing of recommended companion products.

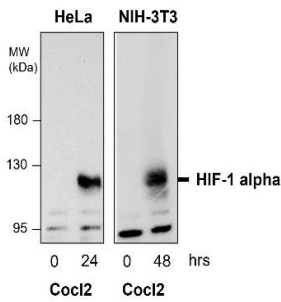
**Storage Buffer**

100mM Tris Glycine, 20% Glycerol (pH7). 0.025% ProClin 300 was added as a preservative

**Storage / Notes**

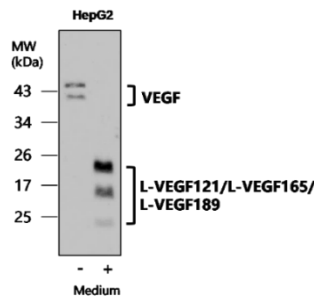
Store at -20°C. Do not aliquot the antibodies. Gently mix before use. Optimal concentrations and conditions for each application should be determined by the user.

**HIF1 alpha antibody**



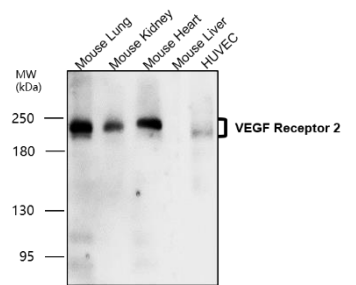
Western blot analysis of cell extracts using IR113-466 at 1/500 dilution.

**VEGF antibody**



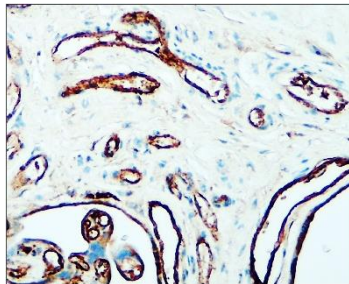
Western blot analysis of cell extracts using IR108-442 at 1/1000 dilution.

**VEGFR2 / KDR antibody**



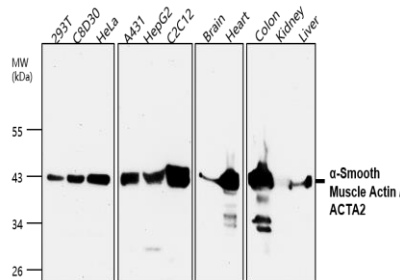
Western blot analysis of cell extracts using IR81-279 at 1/500 dilution.

**CD31 (Human specific) antibody**



**Immunohistochemical of paraffin sections.**  
 Sample : human placenta  
 Ab : CD31 (Human specific), IR75-254 : 1-200

**α-Smooth Muscle Actin antibody**



Western blot analysis of cell and tissue extracts using Fibronectin IR47-146 at 1/1500 dilution.

**iReal Biotechnology**

ISO 13485:2016 Quality Management System Certified



✉ [irealbio@irealbio.com](mailto:irealbio@irealbio.com)

🔍 [www.irealbio.com](http://www.irealbio.com)

