

WB

IF

IHC

Catalog Number: IR13-36

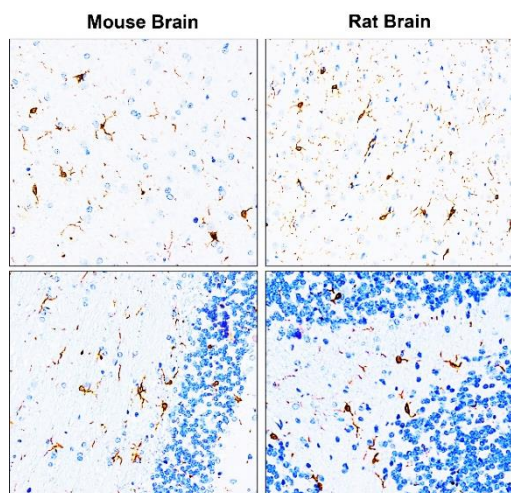
## Anti-Iba1 / AIF1 antibody

Package size: 25, 100  $\mu$ l  
Store at: -20°C  
MW (kDa): 15

### Overview

<b>Product Name</b>	Iba1 / AIF1 antibody
<b>Product Number</b>	IR13-36
<b>Gene Description</b>	allograft inflammatory factor 1
<b>Clonality</b>	Polyclonal
<b>Host</b>	Rabbit
<b>Species Reactivity</b>	Human, mouse, rat
<b>Recommended Applications Dilutions</b>	Western Blot 1:500 – 1:1000 Immunofluorescence 1:100 – 1:300 Immunohistochemistry (Paraffin) 1:100 – 1:300 Immunohistochemistry (Frozen) 1:100 – 1:300
<b>Storage Buffer</b>	100mM Tris Glycine, 1% BSA, 20% Glycerol (pH7). 0.025% ProClin 300 was added as a preservative
<b>Concentration</b>	0.7 mg/ml
<b>Purity</b>	Affinity column purified
<b>Storage</b>	Store at +4°C for short term storage. Long time storage is recommended at -20°C
<b>Notes</b>	Gently mix before use. Optimal concentrations and conditions for each application should be determined by the user.

IR13-36 anti-Iba1/AIF1 antibody IHC image

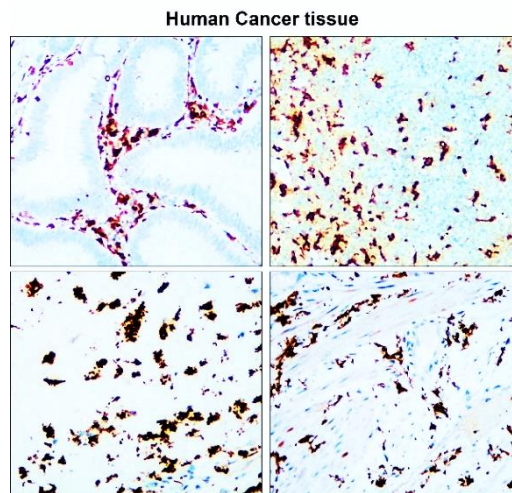


Immunohistochemical analysis of paraffin embedded Mouse / Rat brain tissue labeling Iba1 with IR13-36 at 1/200.

Epitope Retrieval methods: Citrate Buffer, pH 6.0

Data from: [Li-Tzung Biotechnology. Co](http://Li-Tzung Biotechnology. Co)

IR13-36 anti-Iba1/AIF1 antibody IHC image

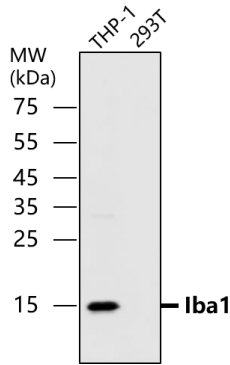


Immunohistochemical analysis of paraffin embedded Human cancer tissue labeling Iba1 with IR13-36 at 1/200.

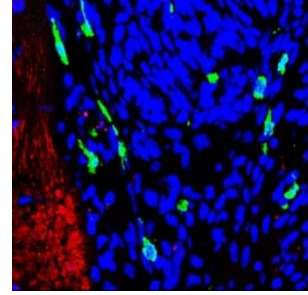
Epitope Retrieval methods: Citrate Buffer, pH 6.0

IR13-36 anti-Iba1/AIF1 antibody WB image

**Iba1 Microglia marker**



Customer feedback Image  
IR13-36 anti-Iba1/AIF1 antibody IHC-Fr image

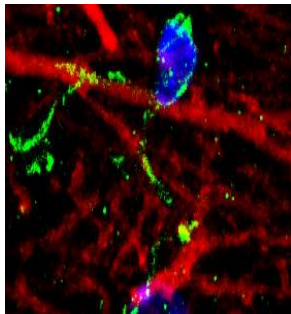


**Iba1/AIF1 antibody - at 1/500 dilution**  
Lysates at 45 µg per lane, This blot was produced using a 15% SDS-PAGE. PVDF membrane was then blocked with 3%BSA for an hour before being incubated with IR13-36 overnight at 4°C.

**Frozen sectioned for immunohistochemical analysis.**

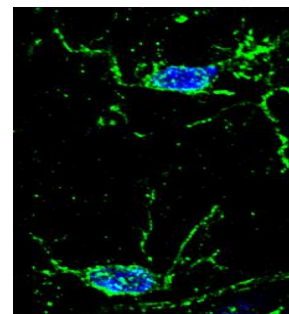
Sample: Frozen sectioned Rat brain.  
Green: Iba1 antibody (IR13-36)  
Red: TUJ1 antibody  
Blue: DAPI

Customer feedback Image  
IR13-36 anti-Iba1/AIF1 antibody IHC-Fr image



Immunohistochemical of frozen sections.  
Sample : mouse cerebellum.  
Green : Iba1 antibody (IR13-36) : 1-200  
Anti-rabbit 488 : 1-500.  
DAPI (blue) was used as the nuclear counter stain.

Customer feedback Image  
IR13-36 anti-Iba1/AIF1 antibody IHC-Fr image



Immunohistochemical of frozen sections.  
Sample : mouse hippocampus.  
Green : Iba1 antibody (IR13-36) : 1-200  
Anti-rabbit 488 : 1-500.  
DAPI (blue) was used as the nuclear counter stain.

**IReal Biotechnology Co., Ltd.**



**ISO 13485:2016 Quality Management System Certified**

[www.irealbio.com](http://www.irealbio.com)

03-5260005

[irealbio@irealbio.com](mailto:irealbio@irealbio.com)