



Catalog No. IRAP5036

Traumatic Brain Injury (TBI) Biomarker Antibody Panel

Package: 1 kits (5x25µl)
Store at: -20°C

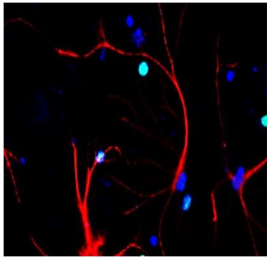
For Research Use Only. Not For Use In Diagnostic Procedures.

Products Included	Catalog No.	Quantity	Isotype	Application
GFAP antibody	IR15-44	25 µl	Rabbit IgG	WB, IF, IHC
S100B antibody	IR27-69	25 µl	Rabbit IgG	WB, IF, IHC
NF-L antibody	IR23-P2	25 µl	Rabbit IgG	WB, IF, IHC
NSE / Enolase-2 antibody	IR31-90	25 µl	Rabbit IgG	WB, IF, IHC
Tau antibody	IR39-123	25 µl	Rabbit IgG	WB, IF, IHC

See www.irealbio.com for individual component applications, species cross-reactivity, dilutions.

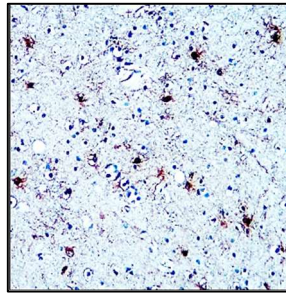
Recommended Antibody Dilutions	Western Blot 1:500 - 1:1000 Immunocytochemistry 1:100 - 1:300 Please visit www.irealbio.com for validation data and a complete listing of recommended companion products.
Storage Buffer	100mM Tris Glycine, 20% Glycerol (pH7). 0.025% ProClin 300 was added as a preservative
Storage / Notes	Store at -20°C. Do not aliquot the antibodies. Gently mix before use. Optimal concentrations and conditions for each application should be determined by the user.

GFAP antibody



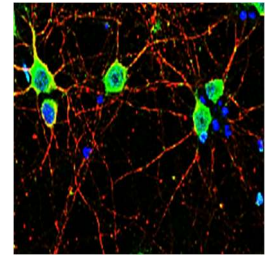
Immunofluorescence analysis of GFAP IR15-44 at 1/100 dilution.

S100B antibody



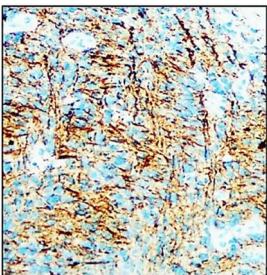
Immunocytochemistry analysis of cell extracts using S100B IR27-69 at 1/100 dilution.

NF-L antibody



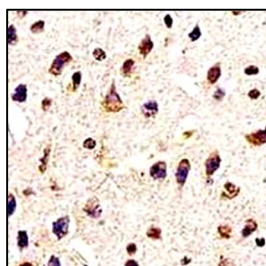
Immunofluorescence analysis of NF-L IR23-P2 at 1/200 dilution.

NSE / Enolase-2 antibody



Immunocytochemistry analysis of cell extracts using NSE / Enolase-2 IR31-90 at 1/400 dilution.

Tau antibody



Immunocytochemistry analysis of cell extracts using Tau IR39-123 at 1/200 dilution.

iReal Biotechnology

ISO 13485:2016 Quality Management System Certified



irealbio@irealbio.com

www.irealbio.com

