

Catalog Number: IRM026

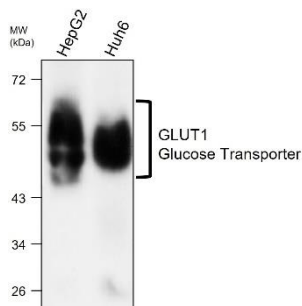
Anti-GLUT1 Glucose Transporter, monoclonal antibody

Package size: 25, 100 μ l
Store at: -20°C
MW (kDa): 45-65

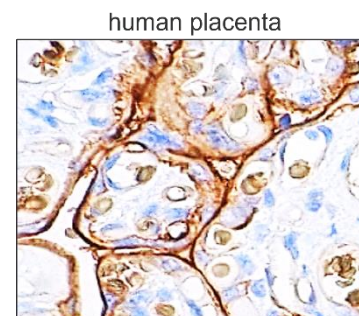
Overview

Product Name	GLUT1 Glucose Transporter, monoclonal antibody
Product Number	IRM026
Clonality	Monoclonal
Host	Mouse (mouse IgG1)
Species Reactivity	Human
Recommended Applications Dilutions	Western Blot 1:500 Immunofluorescence 1:100 – 1:200 Immunohistochemistry (Paraffin) 1:50 – 1:100
Storage Buffer	Phosphate-buffered solution, pH 7.2, 20% Glycerol (pH7). 0.025% ProClin 300 was added as a preservative
Concentration	0.5 mg/ml
Purity	Affinity column purified
Storage	Store at +4°C for short term storage. Long time storage is recommended at -20°C
Notes	Gently mix before use. Optimal concentrations and conditions for each application should be determined by the user.

IRM026 GLUT1 Glucose Transporter, monoclonal antibody WB image



IRM026 GLUT1 Glucose Transporter, monoclonal antibody IHC image



GLUT1 Glucose Transporter, monoclonal antibody at 1/500 dilution. Lysates/ at 35 μ g per lane. Nitrocellulose membrane was then blocked for an hour before being incubated with IRM026 overnight at 4°C.

Immunoperoxidase staining of formalin fixed, paraffin-embedded human placenta tissue.