

Catalog Number: IR360

Anti-C Reactive Protein / CRP antibody

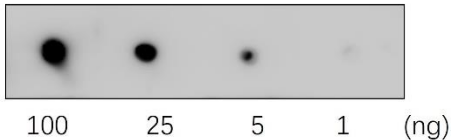
Package size: 25, 100 μ l
Store at: -20°C
MW (kDa): -

Overview

Product Name	C Reactive Protein / CRP antibody
Product Number	IR360
Clonality	Polyclonal
Host	Rabbit
Species Reactivity	Human
Recommended Applications Dilutions	Western Blot 1:500 – 1:1000 Immunofluorescence 1:200 – 1:400
Storage Buffer	100mM Tris Glycine, 30% Glycerol (pH7). 0.025% ProClin 300 was added as a preservative
Concentration	0.93 mg/ml
Purity	Affinity column purified
Storage	Store at +4°C for short term storage. Long time storage is recommended at -20°C
Notes	Gently mix before use. Optimal concentrations and conditions for each application should be determined by the user.

IR360 anti- C Reactive Protein / CRP antibody WB image

IR360
C Reactive Protein / CRP antibody



Anti-C Reactive Protein / CRP antibody at 1/1000 dilution

Specificity and sensitivity of C Reactive Protein / CRP Antibody (IR360)

Nitrocellulose membrane was then blocked for an hour before being incubated with IR360 overnight at 4°C.

iReal Biotechnology Co., Ltd.

