

For Research Use Only. Not For Use In Diagnostic Procedures.

Products Included	Catalog No.	Quantity	Isotype	Application
c-MET antibody	IR219-807	25 µl	Rabbit IgG	WB, IF, IHC
PD-L1 antibody	IR167-645	25 µl	Rabbit IgG	WB, IF, IHC
Ki-67 antibody	IR212-1	25 µl	Rabbit IgG	WB, IF, IHC
TTF-1 antibody	IR350-950	25 µl	Rabbit IgG	WB, IF, IHC
CK5/6 antibody	IR226-865	25 µl	Rabbit IgG	WB, IF, IHC

See [www.irealbio.com](http://www.irealbio.com) for individual component applications, species cross-reactivity, dilutions.

**Recommended Antibody Dilutions**

Western Blot 1:500 - 1:1000  
Immunochemistry 1:100 - 1:300  
Please visit [www.irealbio.com](http://www.irealbio.com) for validation data and a complete listing of recommended companion products.

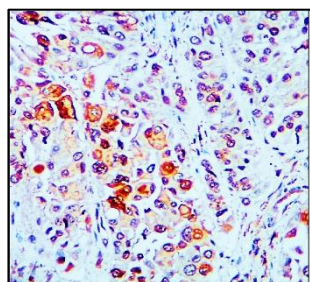
**Storage Buffer**

100mM Tris Glycine, 20% Glycerol (pH7). 0.025% ProClin 300 was added as a preservative

**Storage / Notes**

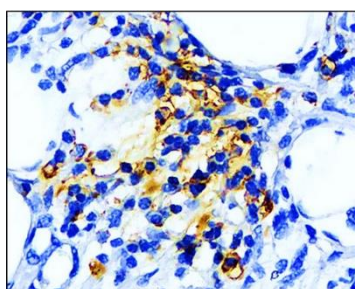
Store at -20°C. Do not aliquot the antibodies. Gently mix before use. Optimal concentrations and conditions for each application should be determined by the user.

**c-MET antibody**



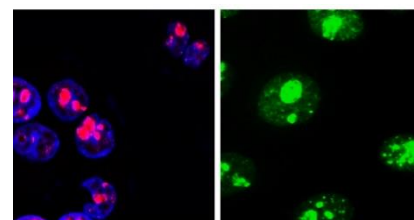
Immunochemistry analysis of c-MET IR219-807 at 1/100 dilution.

**PD-L1 antibody**



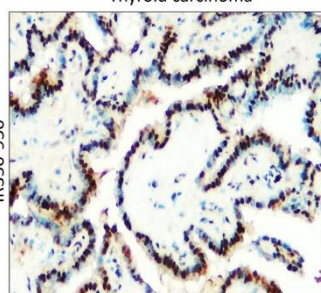
Immunochemistry analysis of PD-L1 IR167-645 at 1/100 dilution.

**Ki-67 antibody**



ICC/IF analysis of Ki-67 IR212-1 at 1/400 dilution.

**TTF-1 antibody**



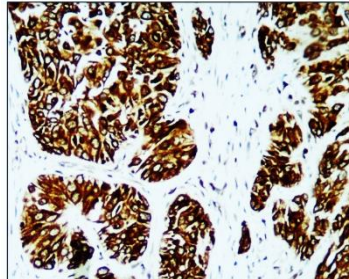
Thyroid carcinoma

TTF-1 antibody  
IR350-950

positive TTF-1 staining

Immunochemistry analysis of TTF-1 IR350-950 at 1/100 dilution.

**Cytokeratin 5/6, CK5/6 antibody**



Breast carcinoma

Immunochemistry analysis of Cytokeratin 5/6, CK5/6 IR226-865 at 1/500 dilution.

**iReal Biotechnology**

ISO 13485:2016 Quality Management System Certified

[irealbio@irealbio.com](mailto:irealbio@irealbio.com)

[www.irealbio.com](http://www.irealbio.com)

