



Catalog No. IRAP5029

Breast Cancer Biomarkers

Antibody Panel

Package: 1 kits (5x25µl)
Store at: -20°C

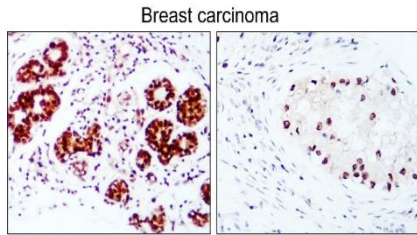
For Research Use Only. Not For Use In Diagnostic Procedures.

Products Included	Catalog No.	Quantity	Isotype	Application
Estrogen Receptor alpha antibody	IR213-777	25 µl	Rabbit IgG	WB, IF, IHC
Progesterone Receptor antibody	IR215-787	25 µl	Rabbit IgG	WB, IF, IHC
HER2 / ERBB2 antibody	IR210-763	25 µl	Rabbit IgG	WB, IF, IHC
Cytokeratin 7 / CK7 antibody	IR228-868	25 µl	Rabbit IgG	WB, IF, IHC
Cytokeratin 20 / CK20 antibody	IR238-892	25 µl	Rabbit IgG	WB, IF, IHC

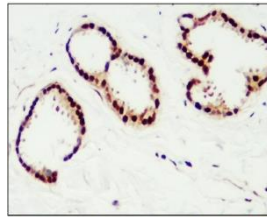
See www.irealbio.com for individual component applications, species cross-reactivity, dilutions.

Recommended Antibody Dilutions	Western Blot 1:500 - 1:1000 Immunochemistry 1:100 - 1:300 Please visit www.irealbio.com for validation data and a complete listing of recommended companion products.
Storage Buffer	100mM Tris Glycine, 20% Glycerol (pH7). 0.025% ProClin 300 was added as a preservative
Storage / Notes	Store at -20°C. Do not aliquot the antibodies. Gently mix before use. Optimal concentrations and conditions for each application should be determined by the user.

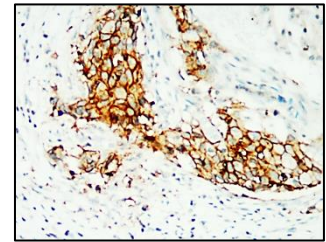
Estrogen Receptor alpha antibody



Progesterone Receptor antibody



HER2 / ERBB2 antibody

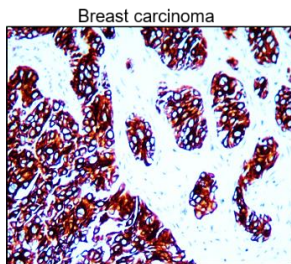


Immunochemistry analysis of Estrogen Receptor alpha IR213-777 at 1/200 dilution.

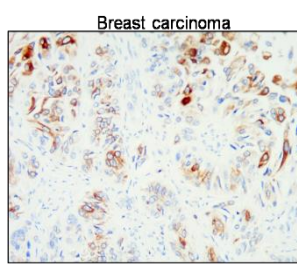
Immunochemistry analysis of Progesterone Receptor IR215-787 at 1/200 dilution.

Immunochemistry analysis of HER2 / ERBB2 IR210-763 at 1/200 dilution.

Cytokeratin 7 / CK7 antibody



Cytokeratin 20 / CK20 antibody



Immunochemistry analysis of Cytokeratin 7 / CK7 IR228-868 at 1/500 dilution.

Immunochemistry analysis of Cytokeratin 20 / CK20 IR238-892 at 1/500 dilution.

iReal Biotechnology

ISO 13485:2016 Quality Management System Certified



irealbio@irealbio.com

www.irealbio.com

