

Catalog Number: IR239-895

Anti- Syndecan-1 / CD138 antibody

Package size: 25, 100 μ l

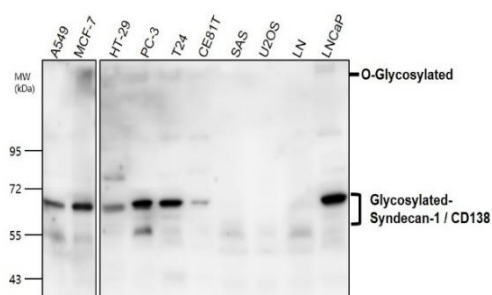
Store at: -20°C

MW (kDa): 130 to 280, 55 to 70

Overview

Product Name	Syndecan-1/ CD138 antibody
Product Number	IR239-895
Gene Description	syndecan 1 / SDC1
Clonality	Polyclonal
Host	Rabbit
Species Reactivity	Human, Mouse
Recommended Applications Dilutions	Western Blot 1:500 - 1:1000 Immunofluorescence 1:200 - 1:400 Immunohistochemistry (Paraffin) 1:200 - 1:300
Storage Buffer	100mM Tris Glycine, 20% Glycerol (pH7). 0.025% ProClin 300 was added as a preservative
Concentration	1.14 mg/ml
Purity	Affinity column purified
Storage	Store at +4°C for short term storage. Long time storage is recommended at -20°C
Notes	Gently mix before use. Optimal concentrations and conditions for each application should be determined by the user.

WB Image (Syndecan-1 / CD138 for cancer biomarker)



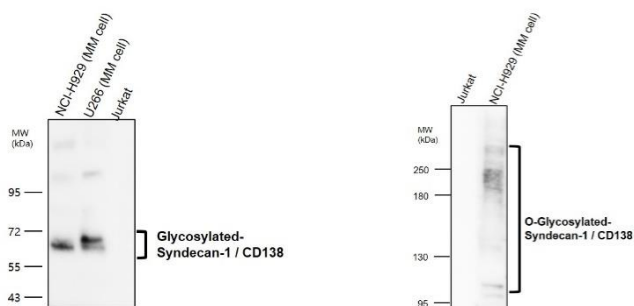
IR239-895 anti-Syndecan-1 / CD138 antibody WB image

All lanes : Anti- Syndecan-1 / CD138 antibody at 1/1000 dilution

Lysates/proteins at 40 μ g per lane.

This blot was produced using a 10% SDS-PAGE. Nitrocellulose membrane was then blocked for an hour before being incubated with IR239-895 overnight at 4°C.

WB Image (Syndecan-1 / CD138 for MM cells biomarker)



IR239-895 anti-Syndecan-1 / CD138 antibody WB image

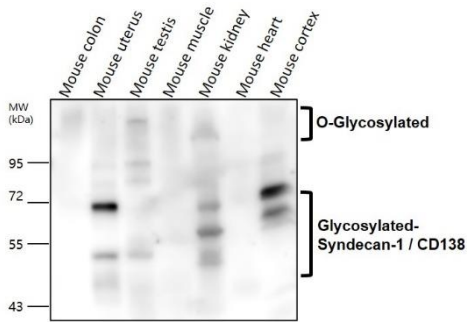
All lanes : Anti- Syndecan-1 / CD138 antibody at 1/500 dilution

Lysates/proteins at 60 μ g per lane.

This blot was produced using a 5&10% SDS-PAGE.

Nitrocellulose membrane was then blocked for an hour before being incubated with IR239-895 overnight at 4°C.

WB Image



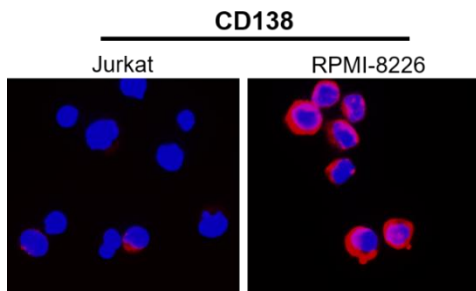
IR239-895 anti-Syndecan-1 / CD138 antibody WB image

All lanes : Anti- Syndecan-1 / CD138 antibody at 1/1000 dilution

Lysates/proteins at 50 µg per lane

This blot was produced using a 10% SDS-PAGE. The gel was run at 140V for 50 minutes before being transferred onto a Nitrocellulose membrane at 18V for 60 minutes. The membrane was then blocked for an hour before being incubated with IR239-895 overnight at 4°C.

ICC/IF Image

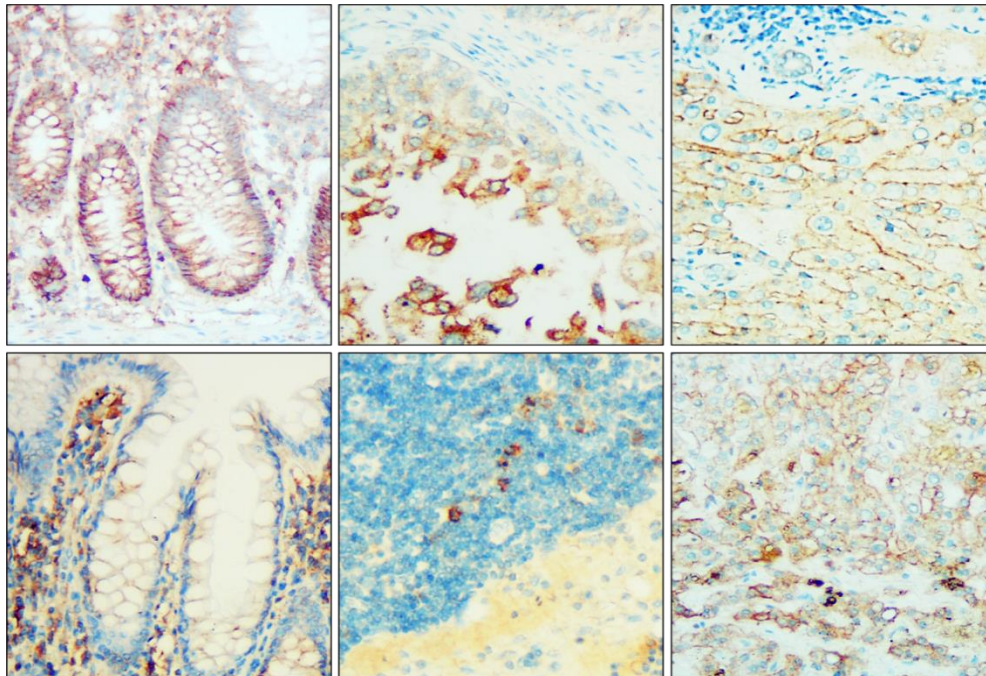


IR239-895 anti- Syndecan-1 / CD138 antibody ICC/IF image

Immunofluorescence: cells were fixed with 4% paraformaldehyde for 10 min at RT, permeabilized with 0.1% NP-40 for 10 min at RT then blocked with 5% BSA for 30 min at room temperature. Cells were stained with IR239-895 anti- CD138 / Syndecan-1 antibody (red) at 1:200 and 4°C. DAPI (blue) was used as the nuclear counter stain.

IR239-895 anti- Syndecan-1 / CD138 antibody IHC image

Immunohistochemical analysis of paraffin embedded Human cancer tissue labeling CD138 / Syndecan-1 with IR239-895 at 1/200.



IReal Biotechnology Co., Ltd.