

Catalog Number: IR167-645

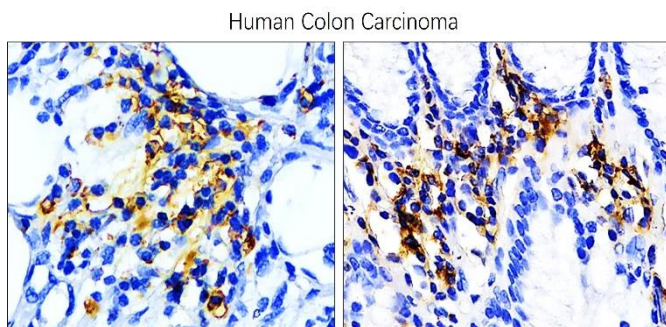
**Anti PD-L1 / CD274 antibody (IHC prefer, N-terminal)**

Package size: 25, 100  $\mu$ l  
Store at: -20°C  
MW (kDa): 40-55

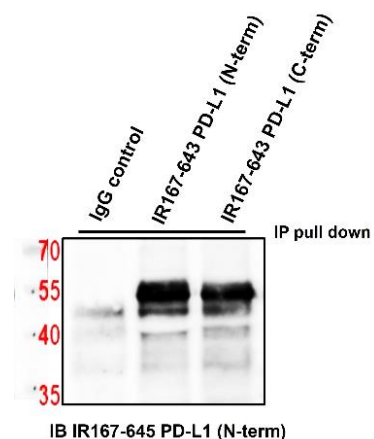
### Overview

Product Name	PD-L1 / CD274 (IHC prefer) antibody (N-terminal)
Product Number	IR167-645
Gene Description	CD274 molecule
Clonality	Polyclonal
Host	Rabbit
Species Reactivity	Human
Recommended Dilutions	Western Blot & Immunoprecipitation: Reported in the literature, not verified in house. Immunofluorescence 1:100 – 1:300 Immunohistochemistry (Paraffin) 1:100
Storage Buffer	100mM Tris Glycine, 25% Glycerol (pH7). 0.025% ProClin 300 was added as a preservative
Concentration	1.26 mg/ml
Purity	Affinity column purified
Storage	Store at +4°C for short term storage. Long time storage is recommended at -20°C
Notes	Gently mix before use. Optimal concentrations and conditions for each application should be determined by the user.

### IR167-645 anti-PD-L1 antibody IHC image



### IR167-645 anti-PD-L1 antibody WB/IP image



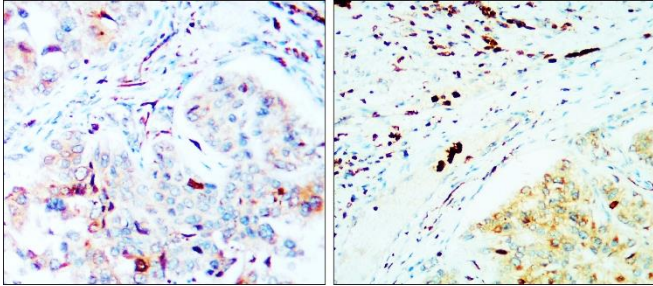
Immunohistochemical analysis of paraffin embedded Human colon cancer tissue labeling PD-L1 / CD274 with IR167-645 at 1/100.

Customer Feedback :  
Cell : MDA-MB-231  
1Ab : IR167-645 1-500  
2Ab : anti Rabbit IgG (Light-chain) 1-3000

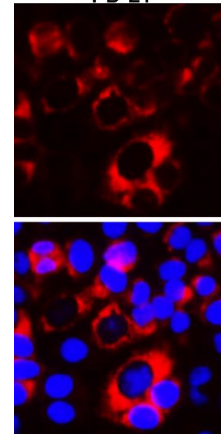
### IR167-645 anti-PD-L1 antibody IHC image

### IR167-645 anti-PD-L1 antibody ICC/IF image

Human Breast Carcinoma



PD-L1



Immunohistochemical analysis of paraffin embedded Human breast cancer tissue labeling PD-L1 / CD274 with IR167-645 at 1/150.

Cells were fixed with 4% PFA for 10 min at RT, permeabilized with 0.1% NP-40 for 10 min at RT then blocked with 5% BSA for 30 min at RT. stained with IR167-645 anti- PD-L1 / CD274 antibody (red) at 1:200 and 4°C.

**iReal Biotechnology Co., Ltd.**

**iReal Antibodies**



**ISO 13485:2016 Quality Management System Certified**

[www.irealbio.com](http://www.irealbio.com)

03-5260005

[irealbio@irealbio.com](mailto:irealbio@irealbio.com)