



Catalog No. IRAP5028

Matrix Remodeling Antibody Panel

Package: 1 kits (5x25µl)
Store at: -20°C

For Research Use Only. Not For Use In Diagnostic Procedures.

Products Included	Catalog No.	Quantity	Isotype	Application
MMP1 antibody	IR66-225	25 µl	Rabbit IgG	WB, IF, IHC
MMP2 antibody	IR67-228	25 µl	Rabbit IgG	WB, IF, IHC
MMP9 antibody	IR70-234	25 µl	Rabbit IgG	WB, IF, IHC
MMP14 / MT1-MMP antibody	IR71-245	25 µl	Rabbit IgG	WB, IF, IHC
TIMP1 antibody	IR72-249	25 µl	Rabbit IgG	WB, IF, IHC

See www.irealbio.com for individual component applications, species cross-reactivity, dilutions.

**Recommended
Antibody Dilutions**

Western Blot 1:500 - 1:1000
Immunochemistry 1:100 - 1:300
Please visit www.irealbio.com for validation data and a complete listing of recommended companion products.

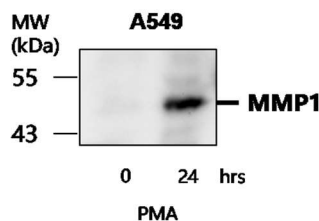
Storage Buffer

100mM Tris Glycine, 20% Glycerol (pH7). 0.025% ProClin 300 was added as a preservative

Storage / Notes

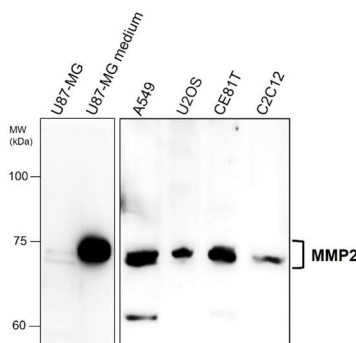
Store at -20°C. Do not aliquot the antibodies. Gently mix before use. Optimal concentrations and conditions for each application should be determined by the user.

MMP1 antibody



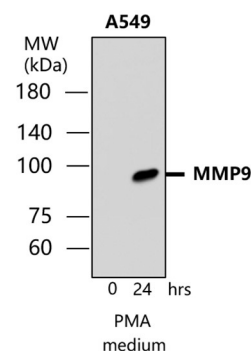
Western blot analysis of cell extracts using **MMP1 antibody** IR66-225 at 1/500 dilution.

MMP2 antibody



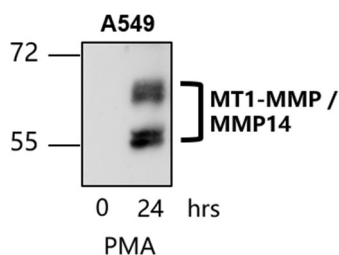
Western blot analysis of cell extracts using **MMP2 antibody** IR67-228 at 1/1000 dilution.

MMP9 antibody



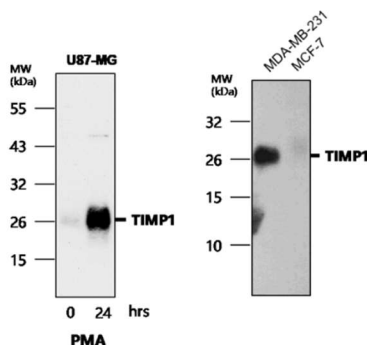
Western blot analysis of cell extracts using **MMP9 antibody** IR70-234 at 1/50 dilution.

MMP14 / MT1-MMP antibody



Western blot analysis of cell extracts using **MMP14 / MT1-MMP antibody** IR71-245 at 1/500 dilution.

TIMP1 antibody



Western blot analysis of cell extracts using **TIMP1 antibody** IR72-249 at 1/1000 dilution.

iReal Biotechnology

ISO 13485:2016 Quality
Management System
Certified

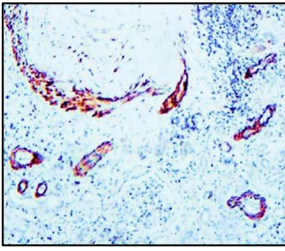


✉ irealbio@irealbio.com

🔍 www.irealbio.com

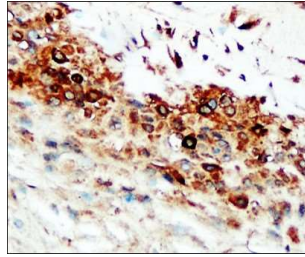


MMP1 antibody



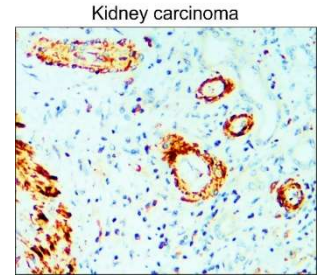
Immunohistochemical analysis of paraffin embedded Human cancer tissue labeling **MMP1 antibody** IR66-225 at 1/100.

MMP2 antibody



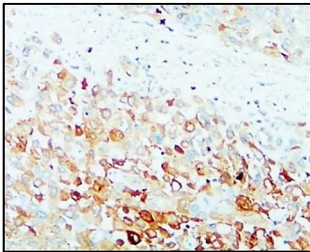
Immunohistochemical analysis of paraffin embedded Human cancer tissue labeling **MMP2 antibody** IR67-228 at 1/100.

MMP9 antibody



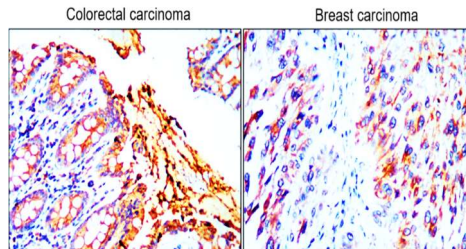
Immunohistochemical analysis of paraffin embedded Human cancer tissue labeling **MMP9 antibody** IR70-234 at 1/200.

MMP14 / MT1-MMP antibody



Immunohistochemical analysis of paraffin embedded Human cancer tissue labeling **MMP14 / MT1-MMP antibody** IR71-245 at 1/100.

TIMP1 antibody



Immunohistochemical analysis of paraffin embedded Human cancer tissue labeling **TIMP1 antibody** IR72-249 at 1/200.

iReal Biotechnology

ISO 13485:2016 Quality Management System Certified



irealbio@irealbio.com

www.irealbio.com

