



Catalog No. IRAP5027

# Inflammasome Antibody Panel

Package: 1 kits (5x25µl)  
Store at: -20°C

For Research Use Only. Not For Use In Diagnostic Procedures.

Products Included	Catalog No.	Quantity	Isotype	Application
Caspase-1 antibody	IR95-397	25 µl	Rabbit IgG	WB, IF, IHC
NLRP3 antibody	IR92-388	25 µl	Rabbit IgG	WB, IF, IHC
IL-1 beta antibody	IR114-473	25 µl	Rabbit IgG	WB, IF, IHC
ASC / TMS1 monoclonal antibody	IRM011	25 µl	Mouse IgG1	WB, IF, IHC
GAPDH antibody	IR3-8	25 µl	Rabbit IgG	WB, IF, IHC

See [www.irealbio.com](http://www.irealbio.com) for individual component applications, species cross-reactivity, dilutions.

### Recommended Antibody Dilutions

Western Blot 1:500 - 1:1000  
Immunochemistry 1:100 - 1:300  
Please visit [www.irealbio.com](http://www.irealbio.com) for validation data and a complete listing of recommended companion products.

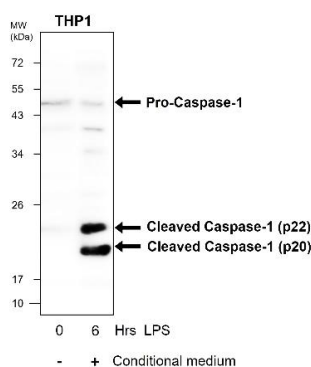
### Storage Buffer

100mM Tris Glycine, 20% Glycerol (pH7). 0.025% ProClin 300 was added as a preservative

### Storage / Notes

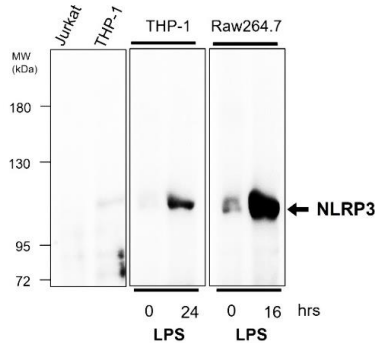
Store at -20°C. Do not aliquot the antibodies. Gently mix before use. Optimal concentrations and conditions for each application should be determined by the user.

### Caspase-1 antibody



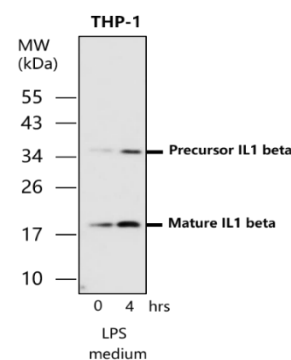
Western blot analysis of cell extracts using **Caspase-1 antibody** IR95-397 at 1/500 dilution.

### NLRP3 antibody



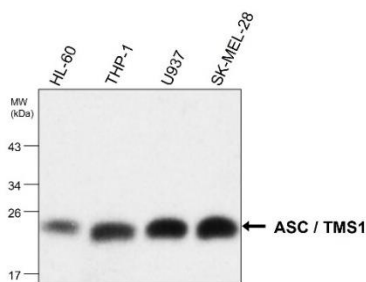
Western blot analysis of cell extracts using **NLRP3 antibody** IR92-388 at 1/700 dilution.

### IL-1 beta antibody



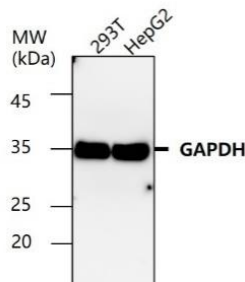
Western blot analysis of cell extracts using **IL-1 beta antibody** IR114-473 at 1/500 dilution.

### ASC / TMS1 monoclonal antibody



Western blot analysis of cell extracts using **ASC / TMS1 monoclonal** IRM011 at 1/1000 dilution.

### GAPDH antibody



Western blot analysis of cell extracts using **GAPDH antibody** IR3-8 at 1/5000 dilution.

**iReal Biotechnology**

ISO 13485:2016 Quality Management System Certified

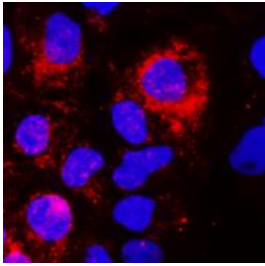


[irealbio@irealbio.com](mailto:irealbio@irealbio.com)

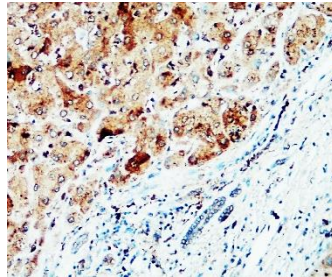
[www.irealbio.com](http://www.irealbio.com)



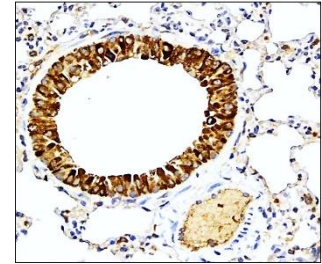
### Caspase-1 antibody



### NLRP3 antibody



### IL-1 beta antibody

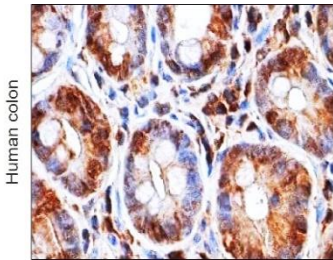


Cells were fixed with 4% PFA for 10 min at RT, permeabilized with 0.1% NP-40 for 10 min at RT then blocked with 5% BSA for 30 min at RT. Cells were stained with IR95-397 anti- **Caspase 1 antibody** (red) at 1:200 and 4°C.

Immunohistochemical analysis of paraffin embedded Human cancer tissue labeling **NLRP3 antibody** IR92-388 at 1/200.

Immunohistochemical analysis of paraffin embedded Human cancer tissue labeling **IL-1 beta antibody** IR114-473 at 1/200.

### ASC / TMS1 monoclonal antibody



Human colon

## iReal Biotechnology

ISO 13485:2016 Quality Management System Certified



[irealbio@irealbio.com](mailto:irealbio@irealbio.com)

[www.irealbio.com](http://www.irealbio.com)



Immunohistochemical analysis of paraffin embedded Human cancer tissue labeling **ASC / TMS1 monoclonal** IRM011 at 1/100.