

Catalog Number: IR64-190

## Anti-Claudin 1 / CLDN1 antibody

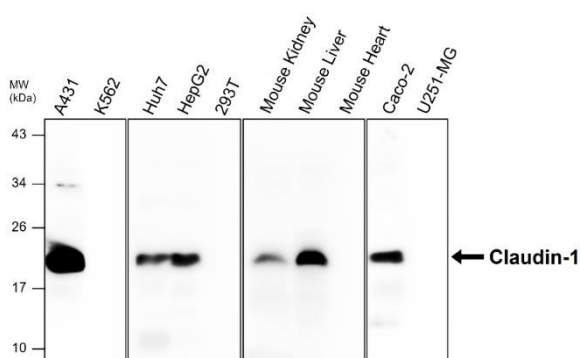
Package size: 100  $\mu$ l  
Store at: -20°C  
MW (kDa): 20

### Overview

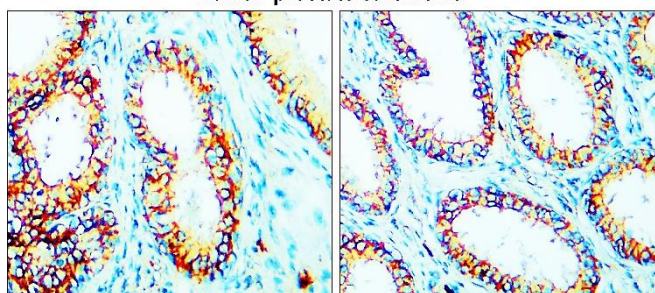
Product Name	Claudin 1 / CLDN1 antibody
Product Number	IR64-190
Gene Description	claudin 1
Clonality	Polyclonal
Host	Rabbit
Species Reactivity	Human, Mouse, Rat
Recommended Applications Dilutions	Western Blot 1:1000 – 1:2000 Immunofluorescence 1:300 – 1:500 Immunohistochemistry (Paraffin) 1:50 – 1:200
Storage Buffer	100mM Tris Glycine, 20% Glycerol (pH7). 0.025% ProClin 300 was added as a preservative
Concentration	1.54 mg/ml
Purity	Affinity column purified
Storage	Store at +4°C for short term storage. Long time storage is recommended at -20°C
Notes	Gently mix before use. Optimal concentrations and conditions for each application should be determined by the user.

### IR64-190 anti-Claudin 1 antibody WB image

### IR64-190 anti-Claudin 1 antibody IHC image



### Human prostate carcinoma

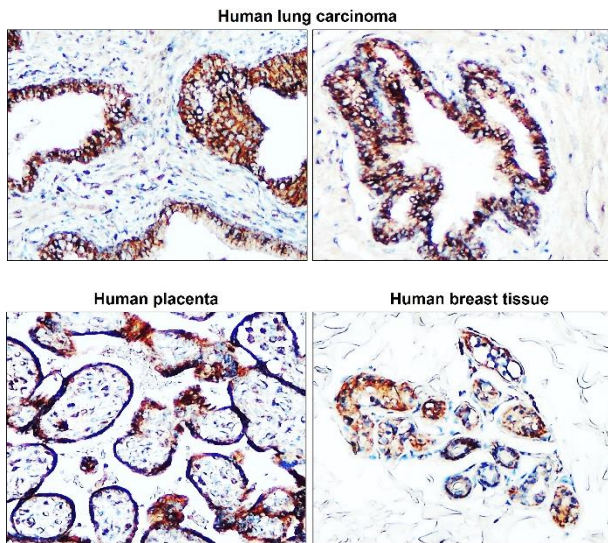


#### Anti- Claudin 1 antibody at 1/1000 dilution

Lysates at 30  $\mu$ g per lane. This blot was produced using a 15% SDS-PAGE. Nitrocellulose membrane was then blocked an hour before being incubated with IR64-190 overnight at 4°C.

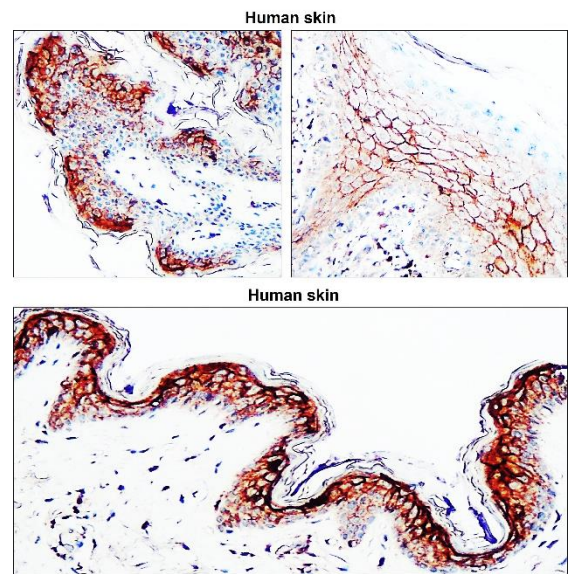
Immunohistochemical analysis of paraffin embedded Human prostate cancer tissue labeling Claudin-1 with IR64-190 at 1/100.

### IR64-190 anti-Claudin 1 antibody IHC image



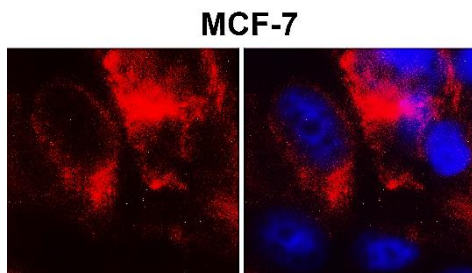
Immunohistochemical analysis of paraffin embedded Human cancer tissue labeling Claudin-1 with IR64-190 at 1/100.

### IR64-190 anti-Claudin 1 antibody IHC image



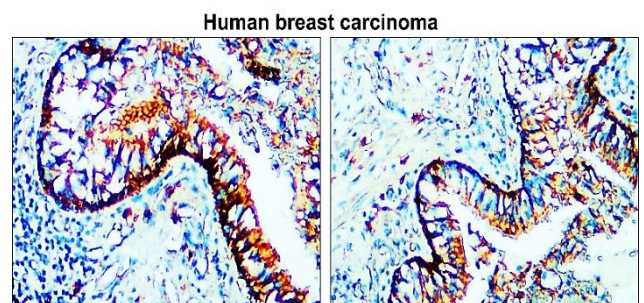
Immunohistochemical analysis of paraffin embedded Human cancer tissue labeling Claudin-1 with IR64-190 at 1/100.

### IR64-190 anti-Claudin 1 antibody ICC/IF image



Immunofluorescence: cells were fixed with 4% paraformaldehyde for 10 min at RT, permeabilized with 0.1% NP-40 for 10 min at RT then blocked with 5% BSA for 30 min at room temperature. Cells were stained with IR64-190 anti-Claudin 1 antibody (red) at 1:400 and 4°C. DAPI (blue) was used as the nuclear counter stain.

### IR64-190 anti-Claudin 1 antibody IHC image



Immunohistochemical analysis of paraffin embedded Human cancer tissue labeling Claudin-1 with IR64-190 at 1/100.

IReal Biotechnology Co., Ltd.

