

Catalog Number: IR324-1020

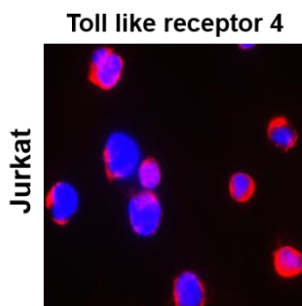
## Anti Toll-like Receptot 4 antibody

Package size: 25, 100 µl  
Store at: -20°C  
MW (kDa): 95 to 145

### Overview

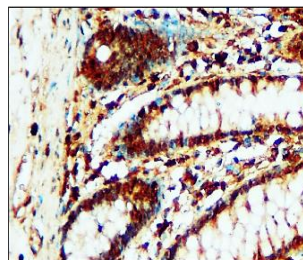
<b>Product Name</b>	<b>Toll-like Receptor 4 antibody</b>
<b>Product Number</b>	<b>IR324-1020</b>
<b>Gene Description</b>	toll-like receptor 4
<b>Clonality</b>	Polyclonal
<b>Host</b>	Rabbit
<b>Species Reactivity</b>	Human, Mouse, Rat
<b>Recommended Applications Dilutions</b>	Western Blot 1:500 – 1:1000 Immunofluorescence 1:300 – 1:500 Immunohistochemistry (Paraffin) 1:200 – 1:300
<b>Storage Buffer</b>	100mM Tris Glycine, 20% Glycerol (pH7). 0.025% ProClin 300 was added as a preservative
<b>Concentration</b>	1.51 mg/ml
<b>Purity</b>	Affinity column purified
<b>Storage</b>	Store at +4°C for short term storage. Long time storage is recommended at -20°C
<b>Notes</b>	Gently mix before use. Optimal concentrations and conditions for each application should be determined by the user.

IR324-1020 anti- Toll-like Receptor 4 antibody ICC/IF image



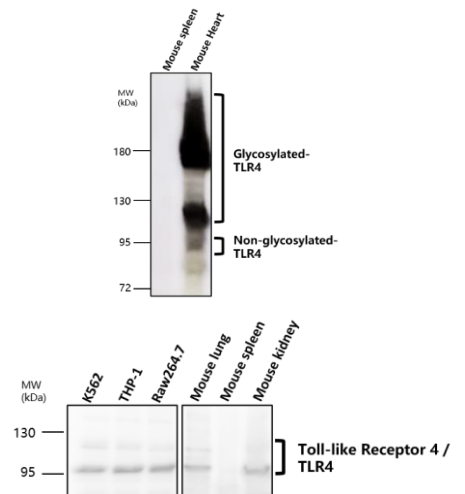
Cells were fixed with 4% PFA for 10 min at RT, permeabilized with 0.1% NP-40 for 10 min at RT then blocked with 5% BSA for 30 min at RT. Cells were stained with IR324-1020 anti- Toll-like Receptor 4 antibody (red) at 1:400 and 4°C. DAPI (blue) was used as the nuclear counter stain.

IR324-1020 anti- Toll-like Receptor 4 antibody IHC image



Immunohistochemical analysis of paraffin embedded Human cancer tissue labeling Toll-like Receptor 4 with IR324-1020 at 1/200.

IR324-1020 anti- Toll-like Receptor 4 antibody WB image



Toll-like Receptor 4 antibody at 1/1000 dilution. Lysates at 45 µg per lane. This blot was produced using a 5% SDS-PAGE. Nitrocellulose membrane was then blocked for an hour before being incubated with IR324-1020 overnight at 4°C.

iReal Biotechnology Co., Ltd.