

Catalog Number: IR5-11

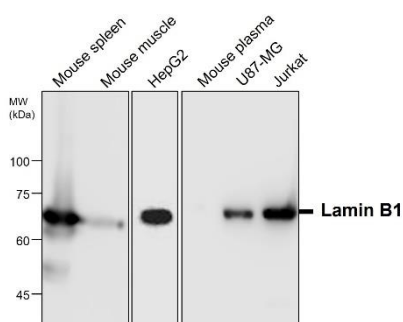
## Anti-Lamin B1 / LMNB1 antibody

Package size: 25, 100, 200  $\mu$ l  
Store at: -20°C  
MW (kDa): 64

### Overview

Product Name	Lamin B1 / LMNB1 antibody
Product Number	IR5-11
Gene Description	lamin B1
Clonality	Polyclonal
Host	Rabbit
Species Reactivity	Human, mouse, rat
Recommended Applications Dilutions	Western Blot 1:1000 – 1:3000 Immunofluorescence 1:200 – 1:500
Storage Buffer	100mM Tris Glycine, 1% BSA, 20% Glycerol (pH7). 0.025% ProClin 300 was added as a preservative
Concentration	0.27 mg/ml
Purity	Affinity column purified
Storage	Store at +4°C for short term storage. Long time storage is recommended at -20°C
Notes	Gently mix before use. Optimal concentrations and conditions for each application should be determined by the user.

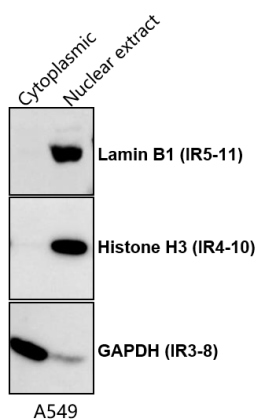
IR5-11 anti-Lamin B1 antibody  
WB image



All lanes : Anti-Lamin B1 antibody - at 1/2000 dilution

Lysates/proteins at 50  $\mu$ g per lane  
This blot was produced using a 7.5% SDS-PAGE. The Nitrocellulose membrane was then blocked for an hour before being incubated with IR5-11 overnight at 4°C.

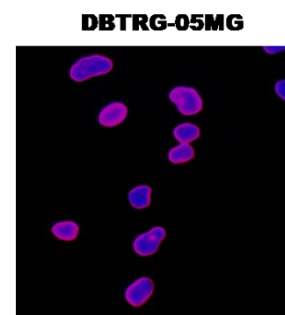
IR5-11 anti-Lamin B1 antibody  
WB image



A549 cells'cytoplasmic and nuclear proteins extracted by 30-min.

Nuclear Protein Extraction Kit (Cat.# IR20107).  
A. SDS-PAGE gel shows the profiles of extracted cytoplasmic proteins and nuclear proteins.  
B.The proteins from the gel were transferred to nitrocellulose membrane and probed with Lamin B1 antibody, Histone H3 antibody (nuclear marker) and GAPDH antibody (cytoplasmic marker).

IR5-11 anti-Lamin B1 antibody  
ICC/IF image



Immunofluorescence: cells were fixed with 4% paraformaldehyde for 10 min at RT, permeabilized with 0.1% NP-40 for 10 min at RT then blocked with 5% BSA for 30 min at room temperature. Cells were stained with IR5-11 anti-Lamin B1 antibody (red) at 1:200 and 4°C. DAPI (blue) was used as the nuclear counter stain.

IReal Biotechnology Co., Ltd.