



Catalog No. IRAP5025

# Junctional Protein

## Antibody Panel

Package: 1 kits (5x25µl)  
Store at: -20°C

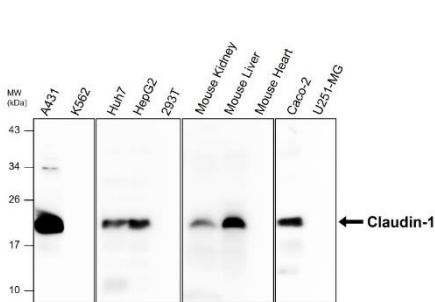
For Research Use Only. Not For Use In Diagnostic Procedures.

Products Included	Catalog No.	Quantity	Isotype	Application
Claudin-1 antibody	IR64-190	25 µl	Rabbit IgG	WB, IF, IHC
E-cadherin antibody	IR55-180	25 µl	Rabbit IgG	WB, IF, IHC
Occludin antibody	IR57-195	25 µl	Rabbit IgG	WB, IF, IHC
ZO-1 antibody	IR56-184	25 µl	Rabbit IgG	WB, IF, IHC
Beta-catenin antibody	IR49-149	25 µl	Rabbit IgG	WB, IF, IHC

See [www.irealbio.com](http://www.irealbio.com) for individual component applications, species cross-reactivity, dilutions.

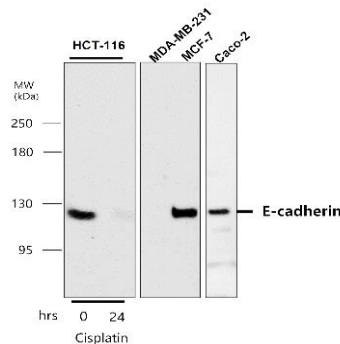
<b>Recommended Antibody Dilutions</b>	Western Blot 1:1000 - 1:2000 Immunohistochemistry 1:100 - 1:200 Please visit <a href="http://www.irealbio.com">www.irealbio.com</a> for validation data and a complete listing of recommended companion products.
<b>Storage Buffer</b>	100mM Tris Glycine, 20% Glycerol (pH7). 0.025% ProClin 300 was added as a preservative
<b>Storage / Notes</b>	Store at -20°C. Do not aliquot the antibodies. Gently mix before use. Optimal concentrations and conditions for each application should be determined by the user.

### Claudin-1 antibody



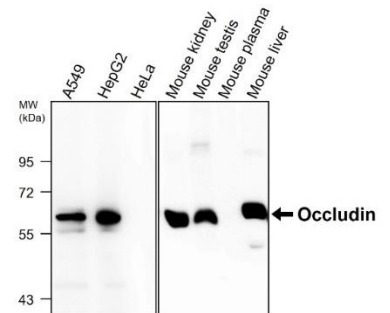
Western blot analysis of cell extracts using Claudin-1 IR64-190 at 1/1000 dilution.

### E-cadherin antibody



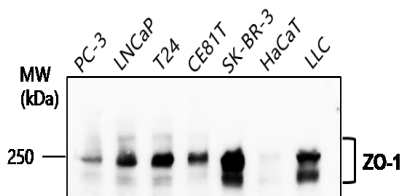
Western blot analysis of cell extracts using E-cadherin IR55-180 at 1/1000 dilution.

### Occludin antibody



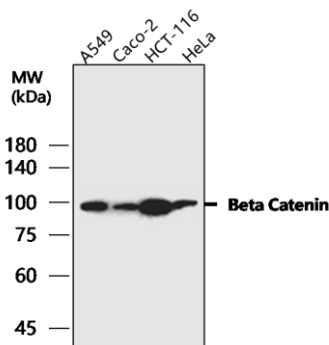
Western blot analysis of cell extracts using Occludin IR57-195 at 1/1000 dilution.

### ZO-1 antibody



Western blot analysis of cell extracts using ZO-1 IR56-184 at 1/1000 dilution.

### Beta-catenin antibody



Western blot analysis of cell extracts using Beta-catenin IR49-149 at 1/1000 dilution.

**iReal Biotechnology**

ISO 13485:2016 Quality Management System Certified



✉ [irealbio@irealbio.com](mailto:irealbio@irealbio.com)

🔍 [www.irealbio.com](http://www.irealbio.com)

