

Catalog Number: IR218-3

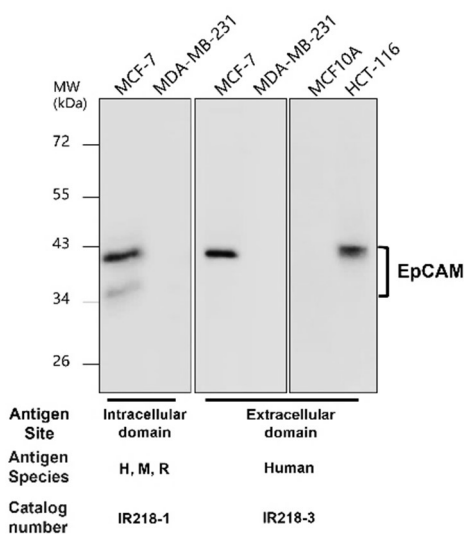
Anti-EpCAM antibody (**Extracellular domain**)

Package size: 25, 100 μ l
Store at: -20°C
MW (kDa): 34-40

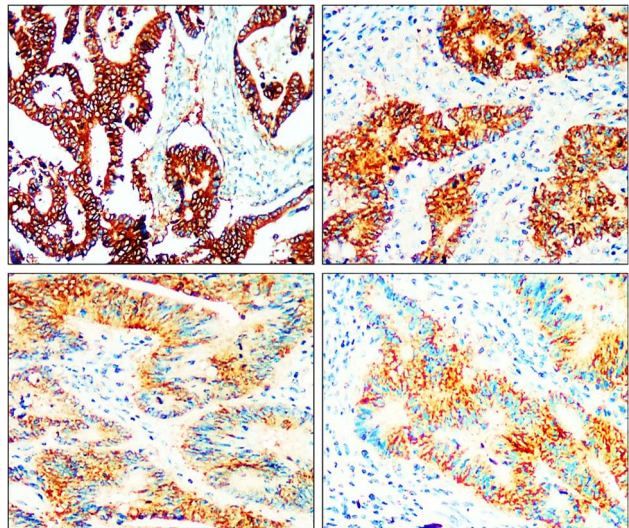
Overview

Product Name	EpCAM antibody (Extracellular domain)
Product Number	IR218-3
Gene Description	epithelial cell adhesion molecule
Clonality	Polyclonal
Host	Rabbit
Species Reactivity	Human, Mouse
Recommended Applications Dilutions	Western Blot 1:1000 – 1:2000 Immunofluorescence 1:200 – 1:400 Immunohistochemistry (Paraffin) 1:100 – 1:150 Flow Cytometry 1:50 – 1:200
Storage Buffer	100mM Tris Glycine, 20% Glycerol (pH7). 0.025% ProClin 300 was added as a preservative
Concentration	1.13 mg/ml
Purity	Affinity column purified
Storage	Store at +4°C for short term storage. Long time storage is recommended at -20°C
Notes	Gently mix before use. Optimal concentrations and conditions for each application should be determined by the user.

IR218-3 anti-EpCAM antibody WB image



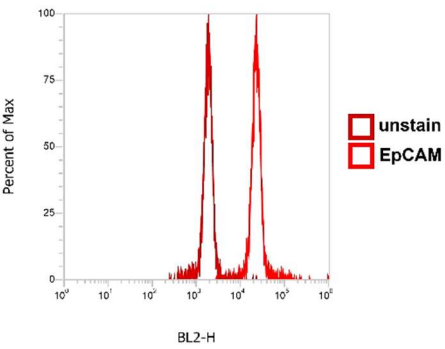
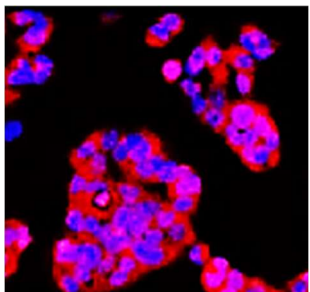
IR218-3 anti- EpCAM antibody IHC image

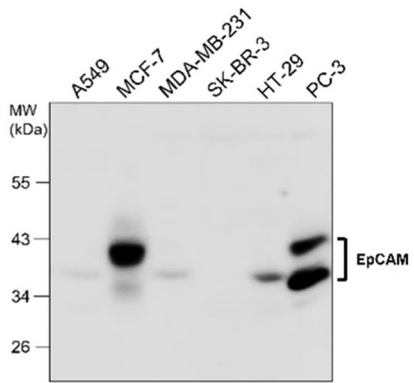
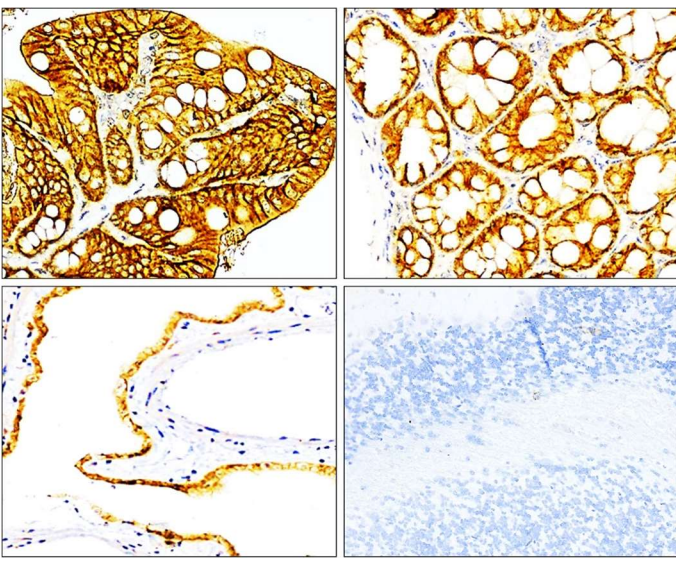


Anti-EpCAM antibody - at 1/1000 dilution

Lysates at 40 μ g per lane. This blot was produced using a 10% SDS-PAGE. Nitrocellulose membrane was then blocked for an hour before being incubated with IR218-3 overnight at 4°C.

Immunohistochemical analysis of paraffin embedded human cancer tissue labeling EpCAM with IR218-3 at 1/200 RT 1hr.

IR218-3 anti- EpCAM antibody FACS image	IR218-3 anti- EpCAM antibody ICC/IF image
	
<p>Product: EpCAM antibody Catalog: IR218-3 Cell : MCF-7 Data from : National Chiao-Tung University</p>	<p>Cell : MCF-7 (DAPI : 1-300, Phalloidin : 1-300) EpCAM, (IR218-3) : 1-200 Anti-rabbit 594 : 1-500 NikonEpi-fluorescence (A-ken) 60x Data from : National Yang-Ming University</p>

IR218-3 anti-EpCAM antibody WB image	IR218-3 anti- EpCAM antibody IHC image
	
<p>Anti-EpCAM antibody - at 1/1000 dilution Lysates at 40 µg per lane. This blot was produced using a 10% SDS-PAGE. Nitrocellulose membrane was then blocked for an hour before being incubated with IR218-3 overnight at 4°C.</p>	<p>Immunohistochemical analysis of paraffin embedded mouse tissue labeling EpCAM with IR218-3 at 1/200 RT 1hr. Epitope Retrieval methods: Citrate Buffer, pH 6.0 Data from: Li-Tzung Biotechnology. Co</p>

IReal Biotechnology Co., Ltd.

