



Catalog No. IRAP5024

Immune Cell Population

Antibody Panel

Package: 1 kits (5x25µl)
Store at: -20°C

For Research Use Only. Not For Use In Diagnostic Procedures.

Products Included	Catalog No.	Quantity	Isotype	Application
CD3 antibody	IR252-897	25 µl	Rabbit IgG	WB, FC, IHC
CD19 antibody	IR253-901	25 µl	Rabbit IgG	WB, FC, IHC
CD45 antibody	IR77-263	25 µl	Rabbit IgG	WB, FC, IHC
CD4 antibody	IR250-898	25 µl	Rabbit IgG	WB, FC, IHC
CD8 antibody	IR251-890	25 µl	Rabbit IgG	WB, FC, IHC

See www.irealbio.com for individual component applications, species cross-reactivity, dilutions.

Recommended Antibody Dilutions

Immunofluorescence 1:100 - 1:300

Flow Cytometry 1:50 - 1:200

Please visit www.irealbio.com for validation data and a complete listing of recommended companion products.

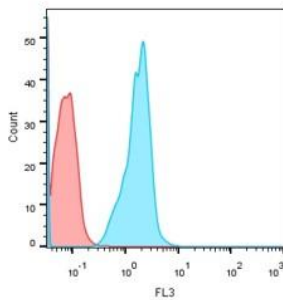
Storage Buffer

100mM Tris Glycine, 20% Glycerol (pH7). 0.025% ProClin 300 was added as a preservative

Storage / Notes

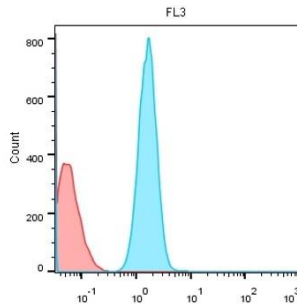
Store at -20°C. Do not aliquot the antibodies. Gently mix before use. Optimal concentrations and conditions for each application should be determined by the user.

CD3 antibody



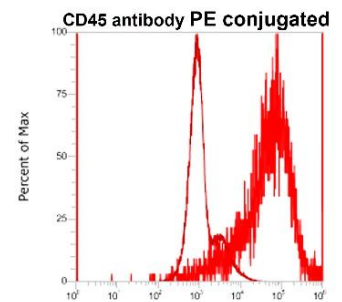
Flow Cytometry analysis of CD3 antibody IR252-897 at 1/100 dilution.

CD19 antibody



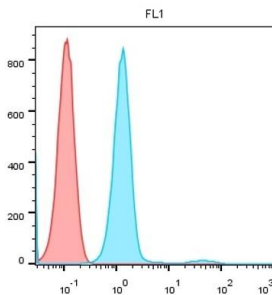
Flow Cytometry analysis of CD19 antibody IR253-901 at 1/100 dilution.

CD45 antibody



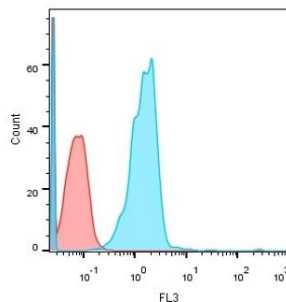
Flow Cytometry analysis of CD45 antibody IR77-263 at 1/100 dilution.

CD4 antibody



Flow Cytometry analysis of CD4 antibody IR250-898 at 1/100 dilution.

CD8 antibody



Flow Cytometry analysis of CD8 antibody IR251-890 at 1/100 dilution.

iReal Biotechnology

ISO 13485:2016 Quality Management System Certified



✉ irealbio@irealbio.com

🔍 www.irealbio.com

