



Catalog No. IRAP5013

# Tau Alzheimer's disease

## Antibody Panel

Package: 1 kits (5x25µl)  
Store at: -20°C

For Research Use Only. Not For Use In Diagnostic Procedures.

Products Included	Catalog No.	Quantity	Isotype	Application
Total-Tau antibody	IR39-123	25 µl	Rabbit IgG	WB, IF, IHC
N-terminal Tau antibody	IR39-122	25 µl	Rabbit IgG	WB, IF, IHC
phospho-Tau181 antibody	IR41-124	25 µl	Rabbit IgG	WB, IF, IHC
phospho-Tau217 antibody	IR42-126	25 µl	Rabbit IgG	WB, IF, IHC
GAPDH antibody	IR3-8	25 µl	Rabbit IgG	WB, IF, IHC

See [www.irealbio.com](http://www.irealbio.com) for individual component applications, species cross-reactivity, dilutions.

### Recommended Antibody Dilutions

Western Blot 1:500 - 1:2000  
Immunochemistry 1:100 - 1:300  
Please visit [www.irealbio.com](http://www.irealbio.com) for validation data and a complete listing of recommended companion products.

### Storage Buffer

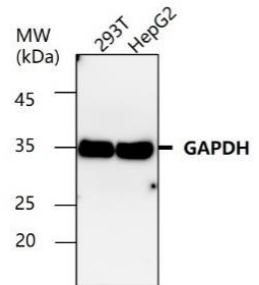
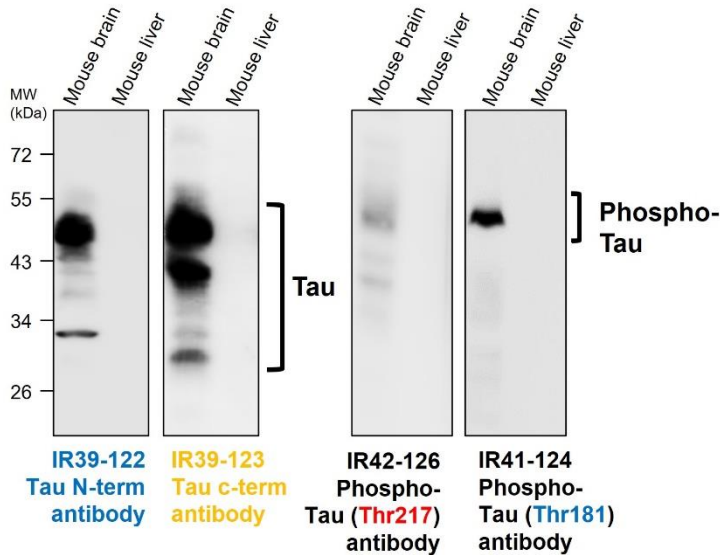
100mM Tris Glycine, 20% Glycerol (pH7). 0.025% ProClin 300 was added as a preservative

### Storage / Notes

Store at -20°C. Do not aliquot the antibodies. Gently mix before use. Optimal concentrations and conditions for each application should be determined by the user.

**Total-Tau antibody**  
**N-terminal Tau antibody**  
**phospho-Tau181 antibody**  
**phospho-Tau217 antibody**

**GAPDH antibody**



**MW (kDa): 34**

Western blot analysis of cell extracts using GAPDH IR3-8 at 1/5000 dilution.

ISO 13485:2016 Quality Management System Certified



[irealbio@irealbio.com](mailto:irealbio@irealbio.com)

[www.irealbio.com](http://www.irealbio.com)



Western blot analysis of mouse tissue extracts.