



Catalog No. IRAP5022

Cell Adhesion / Infiltration

Antibody Panel

Package: 1 kits (5x25µl)
Store at: -20°C

For Research Use Only. Not For Use In Diagnostic Procedures.

Products Included	Catalog No.	Quantity	Isotype	Application
P-selectin / CD62P antibody	IR307-912	25 µl	Rabbit IgG	WB, IF, IHC
L-selectin / CD62L antibody	IR306-909	25 µl	Rabbit IgG	WB, IF, IHC
E-selectin / CD62E antibody	IR308-917	25 µl	Rabbit IgG	WB, IF, IHC
ICAM1 antibody	IR78-268	25 µl	Rabbit IgG	WB, IF, IHC
VEGF antibody	IR108-442	25 µl	Rabbit IgG	WB, IF, IHC

See www.irealbio.com for individual component applications, species cross-reactivity, dilutions.

Recommended Antibody Dilutions

Western Blot 1:500 - 1:1000

Immunofluorescence 1:100 - 1:500

Immunochemistry 1:100 - 1:200

Please visit www.irealbio.com for validation data and a complete listing of recommended companion products.

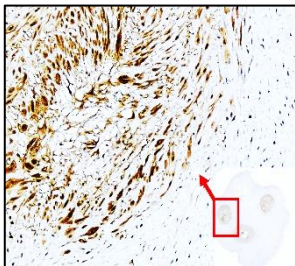
Storage Buffer

100mM Tris Glycine, 20% Glycerol (pH7). 0.025% ProClin 300 was added as a preservative

Storage / Notes

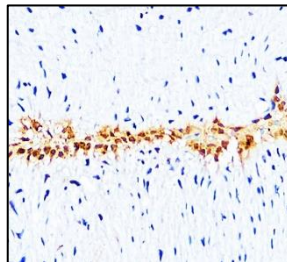
Store at -20°C. Do not aliquot the antibodies. Gently mix before use. Optimal concentrations and conditions for each application should be determined by the user.

P-selectin / CD62P antibody



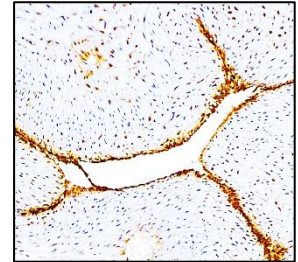
Immunochemistry analysis of P-selectin/CD62P IR307-912 at 1/200 dilution.

L-selectin / CD62L antibody



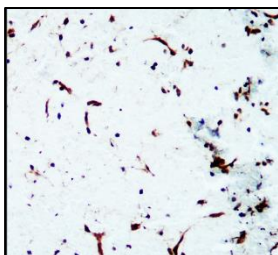
Immunochemistry analysis of L-selectin/CD62L IR306-909 at 1/200 dilution.

E-selectin / CD62E antibody



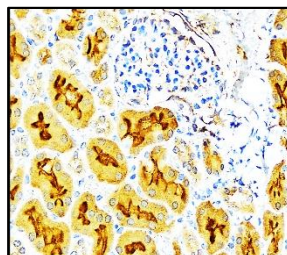
Immunochemistry analysis of E-selectin/CD62E IR308-917 at 1/200 dilution.

ICAM1 antibody



Immunochemistry analysis of ICAM1 IR78-268 at 1/100 dilution.

VEGF antibody



Immunochemistry analysis of VEGF IR108-442 at 1/200 dilution.

iReal Biotechnology

ISO 13485:2016 Quality Management System Certified



✉ irealbio@irealbio.com

🔍 www.irealbio.com

