

Catalog Number: IR24-12

Anti- Na/K ATPase antibody

Package size: 25, 100 μ l
Store at: -20°C
MW (kDa): 95-130

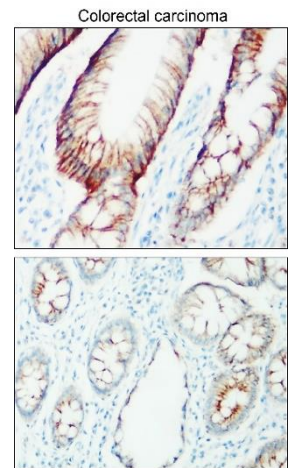
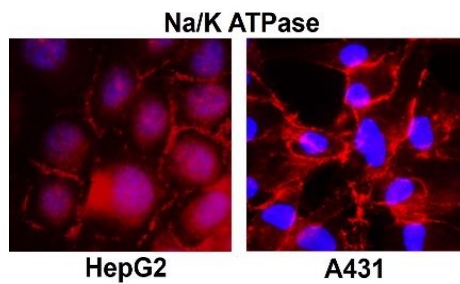
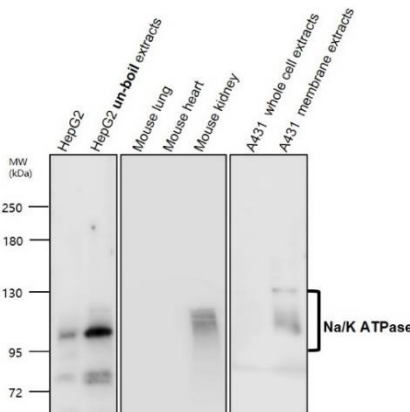
Overview

Product Name	Na/K ATPase antibody
Product Number	IR24-12
Gene Description	ATPase, Na ⁺ /K ⁺ transporting, alpha 1 polypeptide
Clonality	Polyclonal
Host	Rabbit
Species Reactivity	Human, mouse, rat
Recommended Applications Dilutions	Western Blot 1:500-1:1000 Immunofluorescence 1:200 – 1:400 Immunohistochemistry (Paraffin) 1:100 – 1:200
Storage Buffer	100mM Tris Glycine, 20% Glycerol (pH7). 0.025% ProClin 300 was added as a preservative
Concentration	0.47 mg/ml
Purity	Affinity column purified
Storage	Store at +4°C for short term storage. Long time storage is recommended at -20°C
Notes	Gently mix before use. Optimal concentrations and conditions for each application should be determined by the user.

IR24-12 anti-Na/K ATPase antibody WB image

IR24-12 anti-Na/K ATPase antibody ICC/IF image

IR24-12 anti-Na/K ATPase antibody IHC image



Anti- Na/K ATPase antibody at 1/700 dilution
Lysates/proteins at 40 μ g per lane.
This blot was produced using a 5% SDS-PAGE.
Nitrocellulose membrane was then blocked for an hour before being incubated with IR24-12 overnight at 4°C.

Cells were fixed with 4% paraformaldehyde for 10 min at RT, permeabilized with 0.1% NP-40 for 10 min at RT then blocked with 5% BSA for 30 min at room temperature. Cells were stained with IR24-12 anti-**Na/K ATPase** antibody (red) at 1:300 and 4°C. DAPI (blue) was used as the nuclear counter stain.

Immunohistochemical analysis of paraffin embedded human cancer tissue labeling **Na/K ATPase** with IR24-12 at 1/100.