

Catalog Number: IR218-1

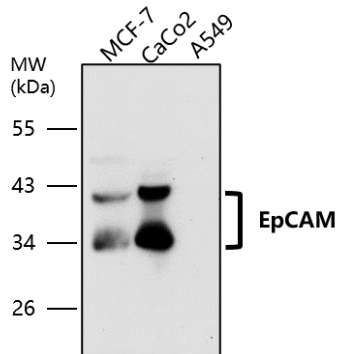
Anti-EpCAM antibody (Intracellular domain)

Package size: 25, 100 μ l
Store at: -20°C
MW (kDa): 34-40

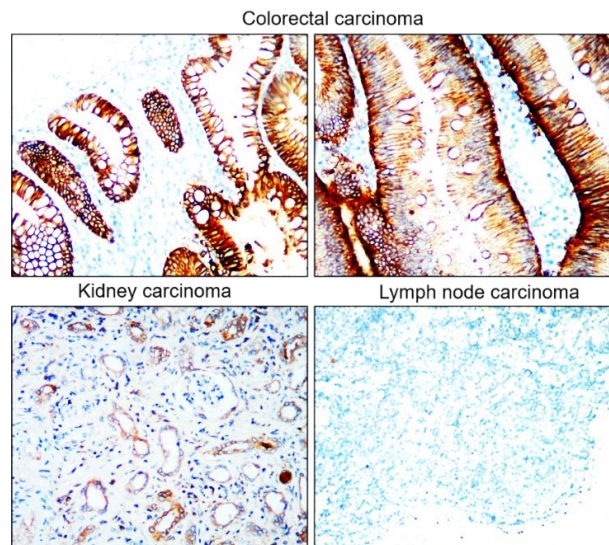
Overview

| | |
|------------------------------------|---|
| Product Name | EpCAM antibody (intracellular domain) |
| Product Number | IR218-1 |
| Gene Description | epithelial cell adhesion molecule |
| Clonality | Polyclonal |
| Host | Rabbit |
| Species Reactivity | Human, mouse, rat |
| Recommended Applications Dilutions | Western Blot 1:1000 – 1:2000 Immunofluorescence 1:200 – 1:500 Immunohistochemistry (Paraffin) 1:200 – 1:300 |
| Storage Buffer | 100mM Tris Glycine, 20% Glycerol (pH7). 0.025% ProClin 300 was added as a preservative |
| Concentration | 0.27 mg/ml |
| Purity | Affinity column purified |
| Storage | Store at +4°C for short term storage. Long time storage is recommended at -20°C |
| Notes | Gently mix before use. Optimal concentrations and conditions for each application should be determined by the user. |

IR218-1 anti-EpCAM antibody WB image



IR218-1 anti- EpCAM antibody IHC image

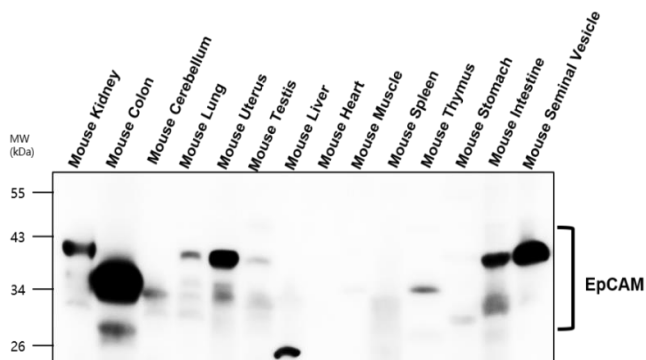


Anti-EpCAM antibody - at 1/1000 dilution

Lysates at 40 μ g per lane. This blot was produced using a 10% SDS-PAGE. Nitrocellulose membrane was then blocked for an hour before being incubated with IR218-1 overnight at 4°C.

Immunohistochemical analysis of paraffin embedded human cancer tissue labeling EpCAM with IR218-1 at 1/200 RT 1hr.

Image

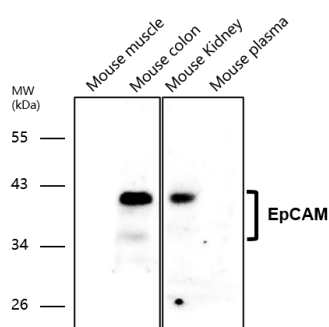


IR218-1 anti-EpCAM antibody WB image

All lanes : Anti-EpCAM antibody - at 1/800 dilution

Lysates/proteins at 60 µg per lane
This blot was produced using a 10% SDS-PAGE. The gel was run at 140V for 50 minutes before being transferred onto a Nitrocellulose membrane at 18V for 60 minutes. The membrane was then blocked for an hour before being incubated with IR218-1 overnight at 4°C.

Image

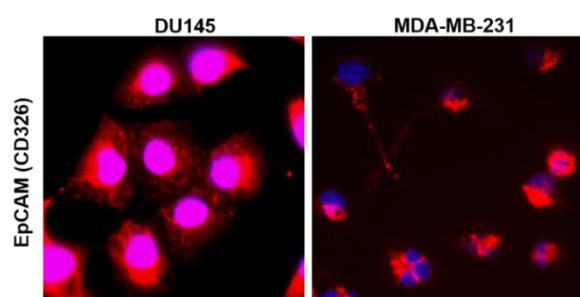


IR218-1 anti-EpCAM antibody WB image

All lanes : Anti-EpCAM antibody - at 1/800 dilution

Lysates/proteins at 60 µg per lane
This blot was produced using a 10% SDS-PAGE. The gel was run at 140V for 50 minutes before being transferred onto a Nitrocellulose membrane at 18V for 60 minutes. The membrane was then blocked for an hour before being incubated with IR218-1 overnight at 4°C.

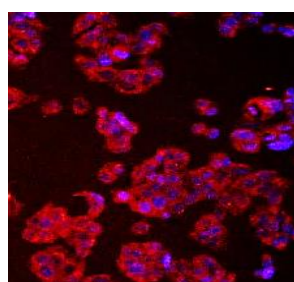
Image



R218-1 anti-EpCAM antibody ICC/IF image

Immunofluorescence: cells were fixed with 4% paraformaldehyde for 10 min at RT, permeabilized with 0.1% NP-40 for 10 min at RT then blocked with 5% BSA for 30 min at room temperature. Cells were stained with IR218-1 anti-EpCAM antibody (red) at 1:200 and 4°C. DAPI (blue) was used as the nuclear counter stain.

Customer feedback Image



R218-1 anti-EpCAM antibody ICC/IF image

Cell : A549
DAPI : 1-300
Phalloidin : 1-300
EpCAM, (IR218-1) : 1-200
Anti-rabbit 488 : 1-500
NikonEpi-fluorescence
(A-ken) 60x
Data from : National Yang-Ming University