



Catalog No. IRAP5021

Mouse Macrophage Polarization

Antibody Panel

Package: 1 kits (5x25µl)
Store at: -20°C

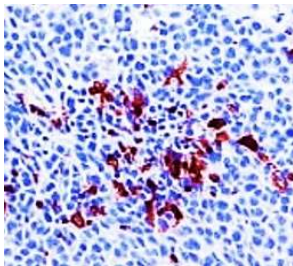
For Research Use Only. Not For Use In Diagnostic Procedures.

Products Included	Catalog No.	Quantity	Isotype	Application
CD11b antibody	IR257-914	25 µl	Rabbit IgG	WB, IF, IHC
CD68 [FA-11] monoclonal	IRR004	25 µl	Rat IgG	IHC, FC
CD206 / MRC1 antibody	IR240-864	25 µl	Rabbit IgG	WB, IF, IHC
Iba1 antibody	IR13-36	25 µl	Rabbit IgG	WB, IF, IHC
iNOS antibody	IR231-856	25 µl	Rabbit IgG	WB, IF, IHC

See www.irealbio.com for individual component applications, species cross-reactivity, dilutions.

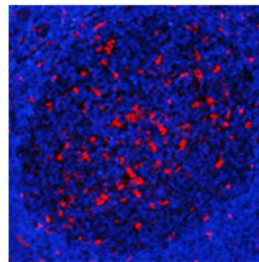
Recommended Antibody Dilutions	Western Blot 1:500 - 1:1000 Immunochemistry 1:100 - 1:200 Please visit www.irealbio.com for validation data and a complete listing of recommended companion products.
Storage Buffer	100mM Tris Glycine, 20% Glycerol (pH7). 0.025% ProClin 300 was added as a preservative
Storage / Notes	Store at -20°C. Do not aliquot the antibodies. Gently mix before use. Optimal concentrations and conditions for each application should be determined by the user.

CD11b antibody



Immunochemistry analysis of cell extracts using CD11b IR257-914 at 1/200 dilution.

CD68 antibody



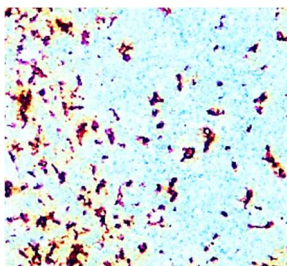
Immunochemistry analysis of cell extracts using CD68 IRR004 at 1/50 dilution.

CD206 antibody



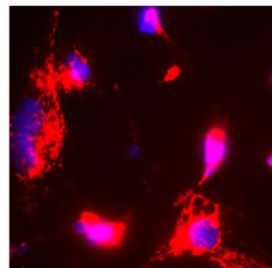
Western blot analysis of cell extracts using CD206 / MRC1 IR240-864 at 1/1000 dilution.

Iba1 antibody



Immunochemistry analysis of cell extracts using Iba1 IR13-36 at 1/200 dilution.

iNOS antibody



Immunofluorescence analysis of iNOS IR231-856 at 1/200 dilution.

iReal Biotechnology

ISO 13485:2016 Quality Management System Certified



✉ irealbio@irealbio.com

🔍 www.irealbio.com

