



Catalog No. IRAP5019
Cancer Stem Cell
Antibody Panel

Package: 1 kits (5x25µl)
 Store at: -20°C

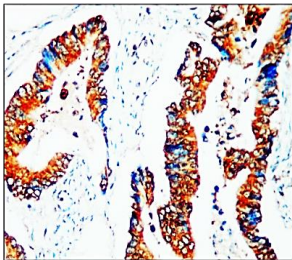
For Research Use Only. Not For Use In Diagnostic Procedures.

Products Included	Catalog No.	Quantity	Isotype	Application
CD133 antibody (Intracellular)	IR30-79	25 µl	Rabbit IgG	WB, IF, IHC
CD133 antibody (Extracellular)	IR30-78	25 µl	Rabbit IgG	WB, IF, IHC
EpCAM antibody (Intracellular)	IR218-1	25 µl	Rabbit IgG	WB, IF, IHC
EpCAM antibody (Extracellular)	IR218-3	25 µl	Rabbit IgG	WB, IF, IHC
CD44 antibody	IR208-752	25 µl	Rabbit IgG	WB, IF, IHC

See www.irealbio.com for individual component applications, species cross-reactivity, dilutions.

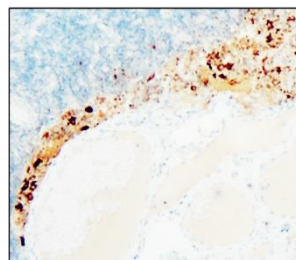
Recommended Antibody Dilutions	Western Blot 1:500 - 1:1000 Immunochemistry 1:100 - 1:300 Please visit www.irealbio.com for validation data and a complete listing of recommended companion products.
Storage Buffer	100mM Tris Glycine, 20% Glycerol (pH7). 0.025% ProClin 300 was added as a preservative
Storage / Notes	Store at -20°C. Do not aliquot the antibodies. Gently mix before use. Optimal concentrations and conditions for each application should be determined by the user.

CD133 antibody (Intracellular)



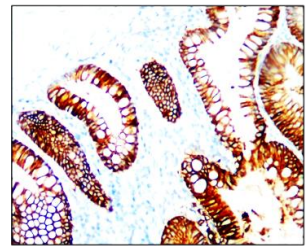
Immunohistochemistry analysis of cell extracts using CD133 IR30-79 at 1/100 dilution.

CD133 antibody (Extracellular)



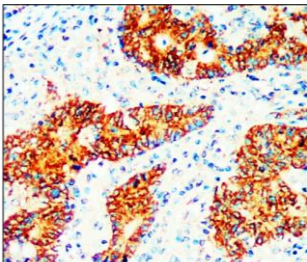
Immunohistochemistry analysis of cell extracts using CD133 IR30-78 at 1/100 dilution.

EpCAM antibody (Intracellular)



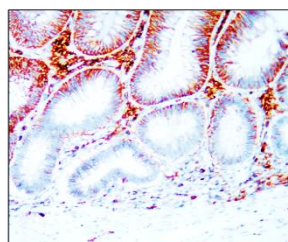
Immunohistochemistry analysis of cell extracts using EpCAM IR218-1 at 1/200 dilution.

EpCAM antibody (Extracellular)



Immunohistochemistry analysis of cell extracts using EpCAM IR218-3 at 1/200 dilution.

CD44 antibody



Immunohistochemistry analysis of cell extracts using CD44 IR208-752 at 1/200 dilution.

iReal Biotechnology

ISO 13485:2016 Quality Management System Certified



✉ irealbio@irealbio.com

🔍 www.irealbio.com

