



Catalog No. IRAP5016

Neurodegeneration

Antibody Panel

Package: 1 kits (5x25µl)
Store at: -20°C

For Research Use Only. Not For Use In Diagnostic Procedures.

Products Included	Catalog No.	Quantity	Isotype	Application
GFAP antibody	IR15-44	25 µl	Rabbit IgG	WB, IF, IHC
Tau antibody	IR39-123	25 µl	Rabbit IgG	WB, IF, IHC
NF-L antibody	IR23-P2	25 µl	Rabbit IgG	WB, IF, IHC
Alpha-synuclein antibody	IR43-128	25 µl	Rabbit IgG	WB, IF, IHC
LRRK2 antibody	IR38-119	25 µl	Rabbit IgG	WB, IF, IHC

See www.irealbio.com for individual component applications, species cross-reactivity, dilutions.

Recommended Antibody Dilutions

Western Blot 1:500 - 1:1000

Immunofluorescence 1:100 - 1:300

Immunochemistry 1:100 - 1:300

Please visit www.irealbio.com for validation data and a complete listing of recommended companion products.

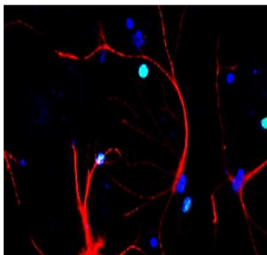
Storage Buffer

100mM Tris Glycine, 20% Glycerol (pH7). 0.025% ProClin 300 was added as a preservative

Storage / Notes

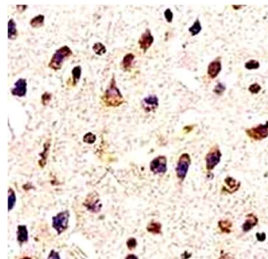
Store at -20°C. Do not aliquot the antibodies. Gently mix before use. Optimal concentrations and conditions for each application should be determined by the user.

GFAP antibody



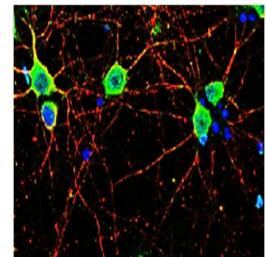
Immunofluorescence analysis of GFAP IR15-44 at 1/100 dilution.

Tau antibody



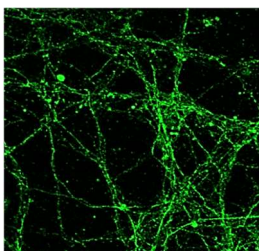
Immunochemistry analysis of cell extracts using Tau IR39-123 at 1/200 dilution.

NF-L antibody



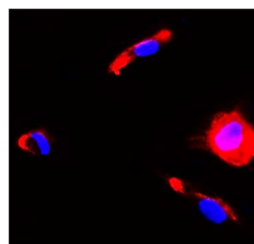
Immunofluorescence analysis of NF-L IR23-P2 at 1/200 dilution.

Lamin B1 antibody



Immunofluorescence analysis of alpha Synuclein IR43-128 at 1/200 dilution.

LRRK2 antibody



Immunofluorescence analysis of LRRK2 IR38-119 at 1/200 dilution.

iReal Biotechnology

ISO 13485:2016 Quality Management System Certified



irealbio@irealbio.com

www.irealbio.com

