



Catalog No. IRAP5015

Neural Progenitors Marker

Antibody Panel

Package: 1 kits (5x25µl)
Store at: -20°C

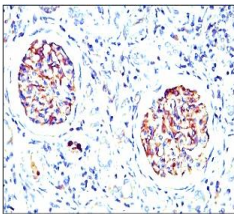
For Research Use Only. Not For Use In Diagnostic Procedures.

Products Included	Catalog No.	Quantity	Isotype	Application
Nestin antibody	IR8-23	25 µl	Rabbit IgG	WB, IF, IHC
SOX2 antibody	IR11-26	25 µl	Rabbit IgG	WB, IF, IHC-Fr
PAX6 antibody	IR6-17	25 µl	Rabbit IgG	WB, IF, IHC-Fr
NOTCH1 antibody	IR7-21	25 µl	Rabbit IgG	WB, IF
N-cadherin antibody	IR46-143	25 µl	Rabbit IgG	WB, IF, IHC, FC

See www.irealbio.com for individual component applications, species cross-reactivity, dilutions.

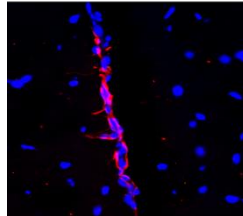
Recommended Antibody Dilutions	Western Blot 1:500 - 1:1000 Immunofluorescence 1:100 - 1:300 Immunochemistry 1:100 - 1:300 Please visit www.irealbio.com for validation data and a complete listing of recommended companion products.
Storage Buffer	100mM Tris Glycine, 20% Glycerol (pH7). 0.025% ProClin 300 was added as a preservative
Storage / Notes	Store at -20°C. Do not aliquot the antibodies. Gently mix before use. Optimal concentrations and conditions for each application should be determined by the user.

Nestin antibody



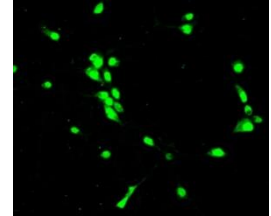
Immunochemistry analysis of cell extracts using Nestin IR8-23 at 1/100 dilution.

SOX2 antibody



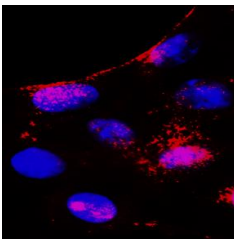
Immunofluorescence analysis of SOX2 IR11-26 at 1/100 dilution.

PAX6 antibody



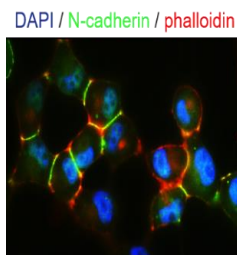
Immunofluorescence analysis of PAX6 IR6-17 at 1/100 dilution.

NOTCH1 antibody



Immunofluorescence analysis of NOTCH1 IR7-21 at 1/200 dilution.

N-cadherin antibody



Immunofluorescence analysis of N-cadherin IR46-143 at 1/200 dilution.

iReal Biotechnology

ISO 13485:2016 Quality Management System Certified



irealbio@irealbio.com

www.irealbio.com

