



Catalog No. IRAP5008
Cell Cycle Marker
Antibody Panel

Package: 1 kits (5x25µl)
 Store at: -20°C

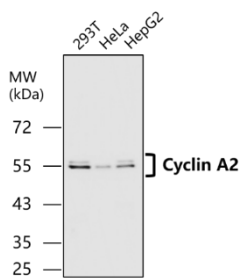
For Research Use Only. Not For Use In Diagnostic Procedures.

Products Included	Catalog No.	Quantity	Isotype	Application
Cyclin A2 antibody	IR115-286	25 µl	Rabbit IgG	WB, IF, IHC
Cyclin B1 antibody	IR116-289	25 µl	Rabbit IgG	WB, IF, IHC
Cyclin D1 antibody	IR117-294	25 µl	Rabbit IgG	WB, IF, IHC
Cyclin E1 antibody	IR119-300	25 µl	Rabbit IgG	WB, IF, IHC
p21 antibody	IR122-312	25 µl	Rabbit IgG	WB, IF, IHC

See www.irealbio.com for individual component applications, species cross-reactivity, dilutions.

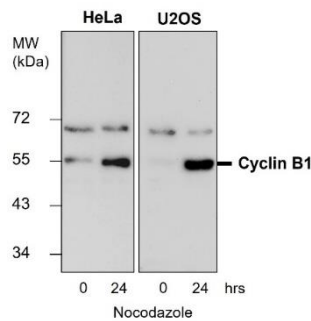
Recommended Antibody Dilutions	Western Blot 1:500 - 1:1000 Immunochemistry 1:100 - 1:200 Please visit www.irealbio.com for validation data and a complete listing of recommended companion products.
Storage Buffer	100mM Tris Glycine, 20% Glycerol (pH7). 0.025% ProClin 300 was added as a preservative
Storage / Notes	Store at -20°C. Do not aliquot the antibodies. Gently mix before use. Optimal concentrations and conditions for each application should be determined by the user.

Cyclin A2 antibody



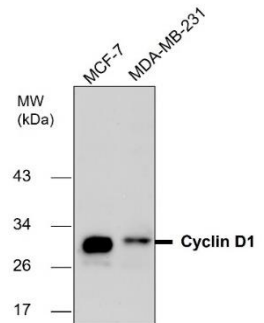
Western blot analysis of cell extracts using **Cyclin A2** IR115-286 at 1/1000 dilution.

Cyclin B1 antibody



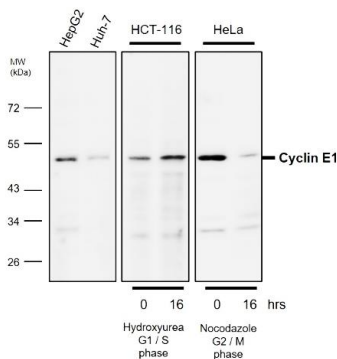
Western blot analysis of cell extracts using **Cyclin B1** IR116-289 at 1/500 dilution.

Cyclin D1 antibody



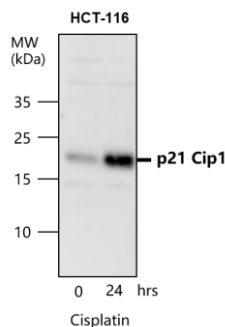
Western blot analysis of cell extracts using **Cyclin D1** IR117-294 at 1/500 dilution.

Cyclin E1 antibody



Western blot analysis of cell extracts using **Cyclin E1** IR119-300 at 1/500 dilution.

p21 antibody



Western blot analysis of cell extracts using **p21** IR122-312 at 1/500 dilution.

iReal Biotechnology

ISO 13485:2016 Quality Management System Certified



irealbio@irealbio.com

www.irealbio.com

