



Catalog No. IRAP5002

ER stress Homeostasis

Antibody Panel

Package: 1 kits (5x25µl)
Store at: -20°C

For Research Use Only. Not For Use In Diagnostic Procedures.

| Products Included | Catalog No. | Quantity | Isotype | Application |
|----------------------|-------------|----------|------------|-------------|
| IRE1 alpha antibody | IR127-515 | 25 µl | Rabbit IgG | WB, IF, IHC |
| CHOP antibody | IR129-522 | 25 µl | Rabbit IgG | WB, IF, IHC |
| BiP / GRP78 antibody | IR130-525 | 25 µl | Rabbit IgG | WB, IF, IHC |
| PERK antibody | IR135-538 | 25 µl | Rabbit IgG | WB, IF, IHC |
| ATF6 antibody | IR132-533 | 25 µl | Rabbit IgG | WB, IF, IHC |

See www.irealbio.com for individual component applications, species cross-reactivity, dilutions.

Recommended Antibody Dilutions

Western Blot 1:500 - 1:2000
Immunocytochemistry 1:100 - 1:300
Please visit www.irealbio.com for validation data and a complete listing of recommended companion products.

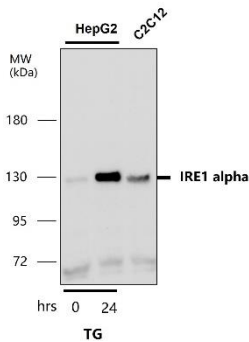
Storage Buffer

100mM Tris Glycine, 20% Glycerol (pH7). 0.025% ProClin 300 was added as a preservative

Storage / Notes

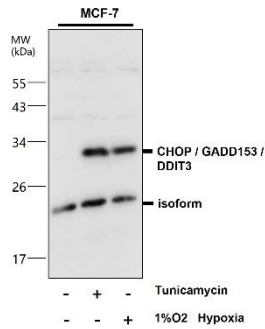
Store at -20°C. Do not aliquot the antibodies. Gently mix before use. Optimal concentrations and conditions for each application should be determined by the user.

IRE1 alpha antibody



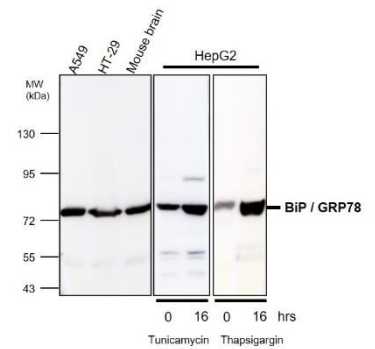
Western blot analysis of cell extracts using IRE1 alpha IR127-515 at 1/500 dilution.

CHOP antibody



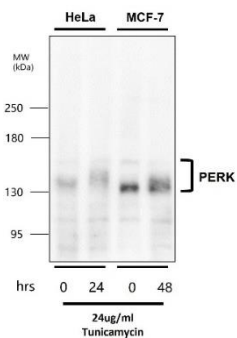
Western blot analysis of cell extracts using CHOP IR129-522 at 1/1000 dilution.

BiP / GRP78 antibody



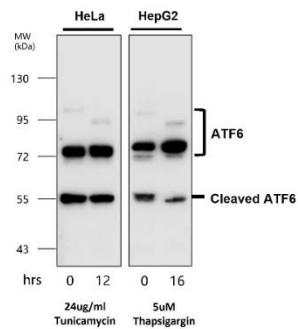
Western blot analysis of cell extracts using BiP / GRP78 IR130-525 at 1/2000 dilution.

PERK antibody



Western blot analysis of cell extracts using PERK IR135-538 at 1/500 dilution.

ATF6 antibody



Western blot analysis of cell and tissue extracts using ATF6 IR132-533 at 1/2000 dilution.

iReal Biotechnology

ISO 13485:2016 Quality Management System Certified



irealbio@irealbio.com

www.irealbio.com

