

Catalog Number: IR133-535

## Anti-eIF2 alpha antibody

Package size: 25, 100  $\mu$ l

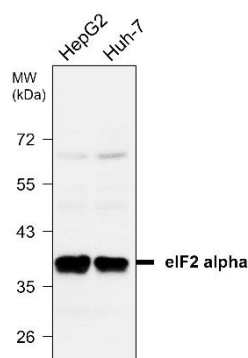
Store at: -20°C

MW (kDa): 38

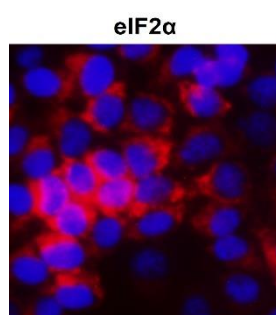
### Overview

|                                    |   |
|------------------------------------|---|
| Product Name                       | eIF2 alpha antibody   |
| Product Number                     | IR133-535   |
| Gene Description                   | eukaryotic translation initiation factor 2, subunit 1 alpha, 35kDa  |
| Clonality                          | Polyclonal  |
| Host                               | Rabbit  |
| Species Reactivity                 | Human, Rat  |
| Recommended Applications Dilutions | Western Blot 1:500<br>Immunofluorescence 1:200 – 1:500<br>Immunohistochemistry (Paraffin) 1:100 – 1:150             |
| Storage Buffer                     | 100mM Tris Glycine, 1%BSA, 20% Glycerol (pH7). 0.025% ProClin 300 was added as a preservative                       |
| Concentration                      | 0.79 mg/ml  |
| Purity                             | Affinity column purified  |
| Storage                            | Store at +4°C for short term storage. Long time storage is recommended at -20°C                                     |
| Notes                              | Gently mix before use. Optimal concentrations and conditions for each application should be determined by the user. |

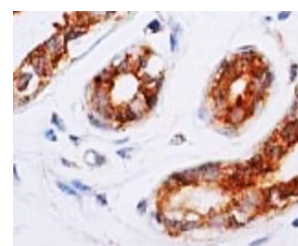
IR133-535 anti-eIF2 alpha antibody  
WB image



IR133-535 anti-eIF2 alpha antibody  
ICC/IF image



IR133-535 anti-eIF2 alpha antibody  
IHC image



**Anti-eIF2 alpha antibody** - at 1/500 dilution, Lysates at 50  $\mu$ g per lane. This blot was produced using a 10% SDS-PAGE. Nitrocellulose membrane was then blocked with 3%BSA an hour before being incubated with IR133-535 overnight at 4°C.

Immunofluorescence: cells were fixed with 4% paraformaldehyde for 10 min at RT, permeabilized with 0.1% NP-40 for 10 min at RT then blocked with 5% BSA for 30 min at room temperature. Cells were stained with IR133-535 anti- eIF2 alpha antibody (red) at 1:200 and 4°C. DAPI (blue) was used as the nuclear counter stain.

Immunohistochemical analysis of paraffin embedded breast tissue labeling eIF2 alpha with IR133-535 at 1/100.

IReal Biotechnology Co., Ltd.