

Catalog Number: IR57-193

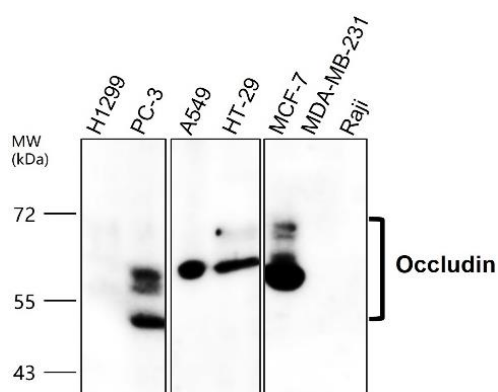
## Anti-Occludin / OCLN antibody

Package size: 25, 100  $\mu$ l  
Store at: -20°C  
MW (kDa): 52-68

### Overview

<b>Product Name</b>	Occludin / OCLN antibody
<b>Product Number</b>	IR57-193
<b>Gene Description</b>	occludin
<b>Clonality</b>	Polyclonal
<b>Host</b>	Rabbit
<b>Species Reactivity</b>	Human, mouse, rat
<b>Recommended Applications Dilutions</b>	Western Blot 1:500 - 1:1000 Immunofluorescence 1:200 – 1:400 Immunohistochemistry (Frozen section) 1:100
<b>Storage Buffer</b>	100mM Tris Glycine, 1% BSA, 20% Glycerol (pH7). 0.025% ProClin 300 was added as a preservative
<b>Concentration</b>	0.56 mg/ml
<b>Purity</b>	Affinity column purified
<b>Storage</b>	Store at +4°C for short term storage. Long time storage is recommended at -20°C
<b>Notes</b>	Gently mix before use. Optimal concentrations and conditions for each application should be determined by the user.

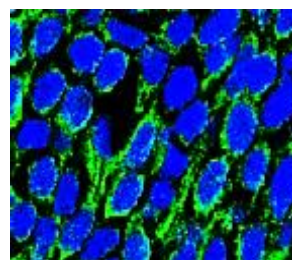
### IR57-193 anti-Occludin antibody WB image



All lanes : Anti- Occludin antibody - at 1/1000 dilution  
Lysates/proteins at 50  $\mu$ g per lane.  
This blot was produced using a 7.5% SDS-PAGE. Nitrocellulose membrane was then blocked for an hour before being incubated with IR57-193 overnight at 4°C.

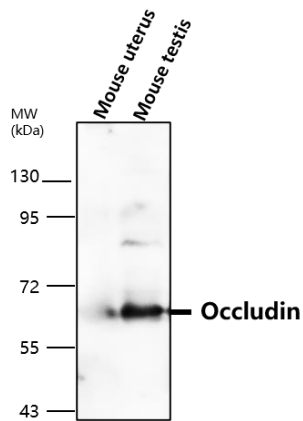
### Customer feedback Image

#### IR57-193 anti-Occludin antibody IHC-Fr image

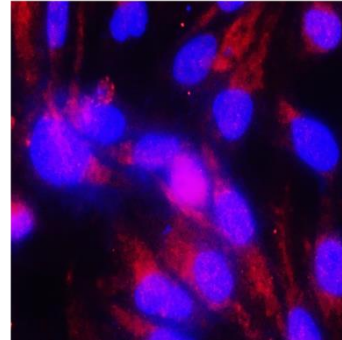


Occludin antibody by Frozen-section  
Sample: Rat brain.  
Green: Occludin antibody diluted at 1:100.  
Blue: DAPI

### IR57-193 anti-Occludin antibody WB image



### IR57-193 anti-Occludin antibody ICC/IF image



**All lanes : Anti- Occludin antibody - at 1/1000 dilution**  
Lysates/proteins at 50 µg per lane.  
This blot was produced using a 7.5% SDS-PAGE. Nitrocellulose membrane was then blocked for an hour before being incubated with IR57-193 overnight at 4°C.

Immunofluorescence: cells were fixed with 4% paraformaldehyde for 10 min at RT, permeabilized with 0.1% NP-40 for 10 min at RT then blocked with 5% BSA for 30 min at room temperature. Cells were stained with IR57-193 anti-Occludin antibody (red) at 1:200 and 4°C. DAPI (blue) was used as the nuclear counter stain.

**IReal Biotechnology Co., Ltd.**

 **iReal Antibodies**



**ISO 13485:2016 Quality Management System Certified**

 [www.irealbio.com](http://www.irealbio.com)

 03-5260005

 [irealbio@irealbio.com](mailto:irealbio@irealbio.com)