

Catalog Number: IR41-124

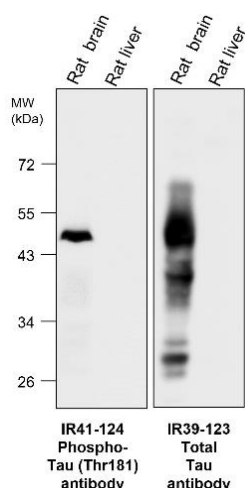
Anti Phospho-Tau (Thr181) antibody

Package size: 25, 100 μ l
Store at: -20°C
MW (kDa): 50, 43

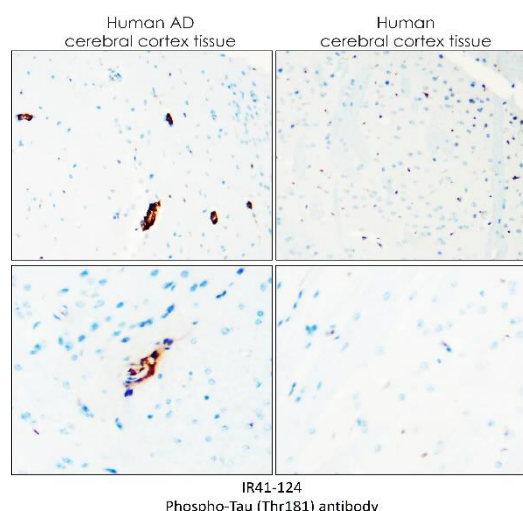
Overview

Product Name	Phospho-Tau (Thr181) antibody
Product Number	IR41-124
Gene Description	microtubule-associated protein tau
Clonality	Polyclonal
Host	Rabbit
Species Reactivity	Human, mouse, rat
Recommended Applications Dilutions	Western Blot 1:500 – 1:1500 Immunofluorescence 1:200 – 1:400 Immunohistochemistry (Paraffin) 1:100
Storage Buffer	100mM Tris Glycine, 30% Glycerol (pH7). 0.025% ProClin 300 was added as a preservative
Concentration	0.1 mg/ml
Purity	Affinity column purified
Storage	Store at +4°C for short term storage. Long time storage is recommended at -20°C
Notes	Gently mix before use. Optimal concentrations and conditions for each application should be determined by the user.

IR41-124 anti-Phospho-Tau (Thr181) antibody
WB image



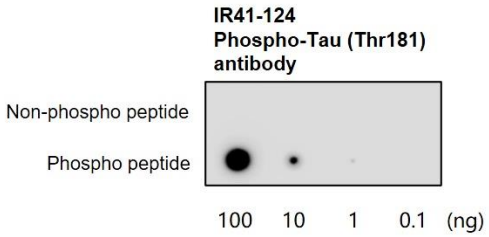
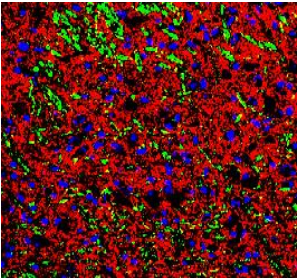
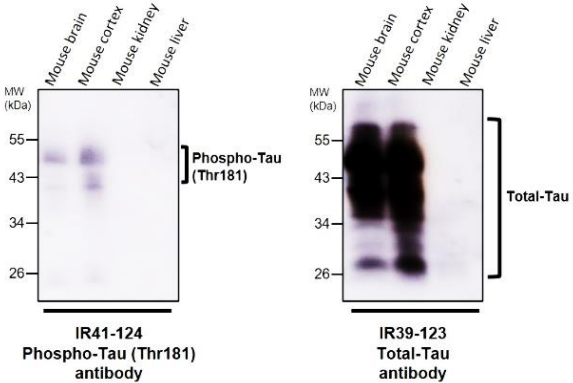
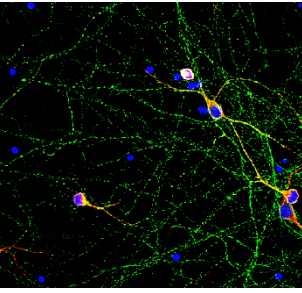
IR41-124 anti-Phospho-Tau (Thr181) antibody
IHC image



Anti-Phospho-Tau (Thr181) antibody at 1/1000 dilution

Lysates/proteins at 55 μ g per lane
This blot was produced using a 12% SDS-PAGE.
Nitrocellulose membrane was then blocked for an hour before being incubated with IR41-124 overnight at 4°C.

Immunohistochemical analysis of paraffin embedded Human tissue labeling phosphor-Tau (Thr181) with IR41-124 at 1/100.

<p>IR41-124 anti-Phospho-Tau (Thr181) antibody WB image</p>	<p>Customer feedback Image IR41-124 anti-Phospho-Tau (Thr181) antibody IHC image</p>
 <p>IR41-124 Phospho-Tau (Thr181) antibody</p> <p>Non-phospho peptide</p> <p>Phospho peptide</p> <p>100 10 1 0.1 (ng)</p>	
<p>Specificity and sensitivity of Phospho-Tau (Thr181) Antibody (IR41-124)</p>	<p>Immunohistochemical of frozen sections. Phospho-Tau (Thr181) antibody (IR41-124): 1-200 Red: TuJ1 antibody Anti-rabbit 488: 1-500</p>
<p>IR41-124 anti-Phospho-Tau (Thr181) antibody WB image</p>	<p>Customer feedback Image IR41-124 anti-Phospho-Tau (Thr181) antibody IF image</p>
 <p>Mouse brain Mouse cortex Mouse kidney Mouse liver</p> <p>MW (kDa)</p> <p>55 43 34 26</p> <p>Phospho-Tau (Thr181)</p> <p>IR41-124 Phospho-Tau (Thr181) antibody</p> <p>Mouse brain Mouse cortex Mouse kidney Mouse liver</p> <p>MW (kDa)</p> <p>55 43 34 26</p> <p>Total-Tau</p> <p>IR39-123 Total-Tau antibody</p>	
<p>Anti-Phospho-Tau (Thr181) antibody at 1/1000 dilution Lysates/proteins at 55 µg per lane This blot was produced using a 12% SDS-PAGE. Nitrocellulose membrane was then blocked for an hour before being incubated with IR41-124 overnight at 4°C.</p>	<p>Immunofluorescent analysis. Sample: cortical neurons Phospho-Tau (Thr181) antibody (IR41-124): 1-200 Red: MAP2 antibody Anti-rabbit 488: 1-500 Fixed: 4% paraformaldehyde at RT for 20 min.</p>

IReal Biotechnology Co., Ltd.



ISO 13485:2016 Quality Management System Certified

www.irealbio.com

03-5260005

irealbio@irealbio.com