

Catalog Number: IR15-44

## Anti-GFAP antibody

Package size: 25, 100  $\mu$ l

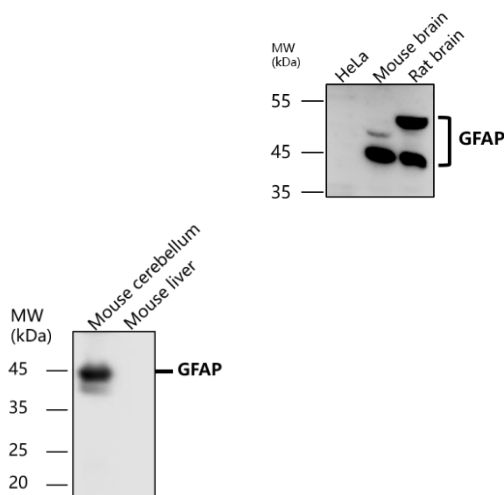
Store at: -20°C

MW (kDa): 45-50

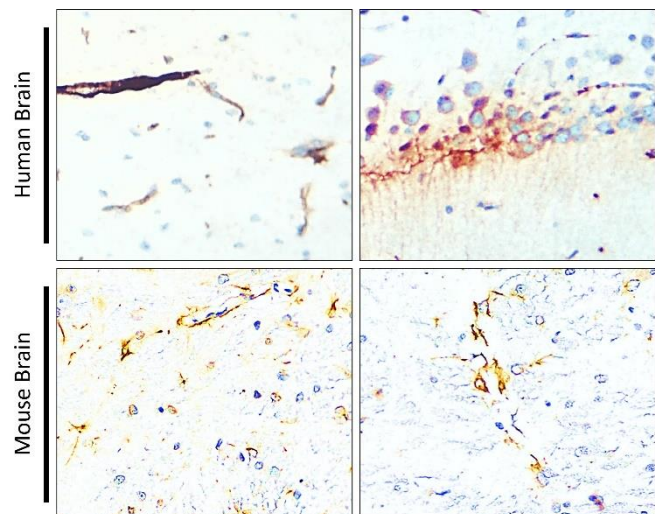
### Overview

<b>Product Name</b>	GFAP antibody
<b>Product Number</b>	IR15-44
<b>Gene Description</b>	glial fibrillary acidic protein
<b>Clonality</b>	Polyclonal
<b>Host</b>	Rabbit
<b>Species Reactivity</b>	Human, mouse, rat
<b>Recommended Applications Dilutions</b>	Western Blot 1:1000-1:2000 Immunofluorescence 1:200 – 1:500 Immunohistochemistry (Frozen) 1:100 – 1:300 Immunohistochemistry (Paraffin) 1:100 – 1:300
<b>Storage Buffer</b>	100mM Tris Glycine, 1% BSA, 20% Glycerol (pH7). 0.025% ProClin 300 was added as a preservative
<b>Concentration</b>	0.31 mg/ml
<b>Purity</b>	Affinity column purified
<b>Storage</b>	Store at +4°C for short term storage. Long time storage is recommended at -20°C
<b>Notes</b>	Gently mix before use. Optimal concentrations and conditions for each application should be determined by the user.

IR15-44 anti-GFAP antibody WB image

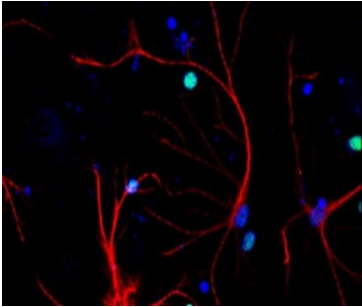
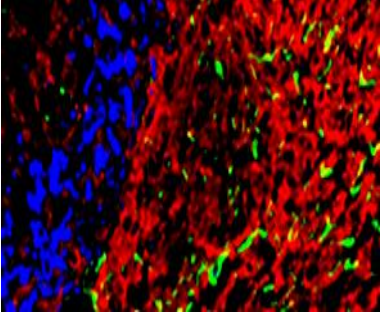
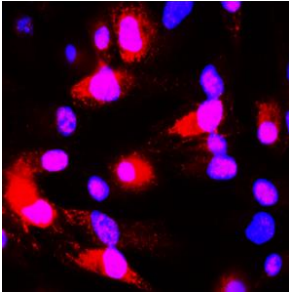
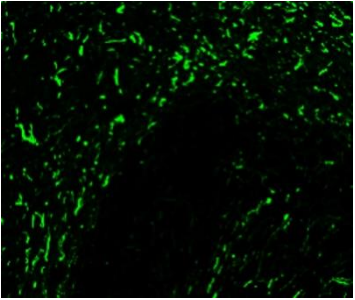


IR15-44 anti-GFAP antibody IHC image



**All lanes : Anti-GFAP antibody at 1/1000 dilution**  
Lysates/proteins at 60  $\mu$ g per lane  
This blot was produced using a 12% SDS-PAGE.  
Nitrocellulose was then blocked for an hour before  
being incubated with IR15-44 overnight at 4°C.

Immunohistochemical analysis of paraffin embedded Human brain tissue labeling GFAP antibody with IR15-44 at 1/100.

<p align="center"><b>Customer feedback Image</b> IR15-44 anti-GFAP antibody IF image</p>	<p align="center"><b>Customer feedback Image</b> IR15-44 anti-GFAP antibody IHC image</p>
	
<p><b>Immunofluorescent analysis.</b> Sample : primary cortical neurons Red : GFAP (IR15-44) : 1-200 Blue : DAPI was used as the nuclear counter stain. Fixed : 4% paraformaldehyde at RT for 20 min.</p>	<p><b>Immunohistochemical of frozen sections.</b> Sample : mouse cerebellum. Green : GFAP (IR15-44) : 1-200 Anti-rabbit 488 : 1-500</p>
<p align="center"><b>IR15-44 anti-GFAP antibody ICC/IF image</b></p>	<p align="center"><b>Customer feedback Image</b> IR15-44 anti-GFAP antibody IHC image</p>
<p align="center"><b>U87-MG</b></p> 	
<p>Immunofluorescence: cells were fixed with 4% paraformaldehyde for 10 min at RT, permeabilized with 0.1% NP-40 for 10 min at RT then blocked with 5% BSA for 30 min at room temperature. Cells were stained with IR15-44 anti-GFAP antibody (red) at 1:200 and 4°C. DAPI (blue) was used as the nuclear counter stain.</p>	<p><b>Immunohistochemical of frozen sections.</b> Sample : mouse cerebellum. Green : GFAP (IR15-44) : 1-200 Anti-rabbit 488 : 1-500</p>

**IReal Biotechnology Co., Ltd.**



**ISO 13485:2016 Quality Management System Certified**

[www.irealbio.com](http://www.irealbio.com)

03-5260005

[irealbio@irealbio.com](mailto:irealbio@irealbio.com)