

Catalog Number: IR72-249

Anti TIMP1 antibody

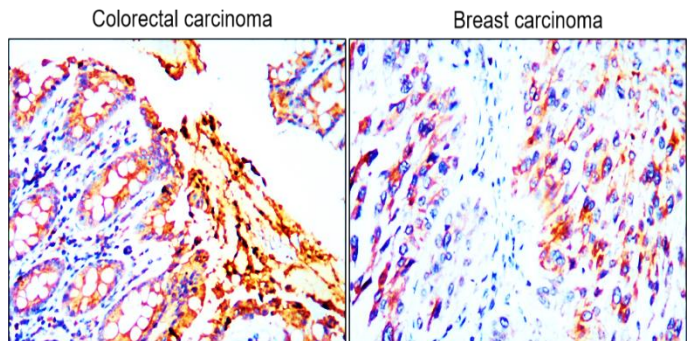
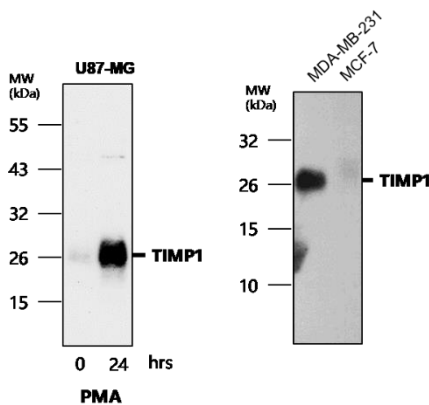
Package size: 25, 100 μ l
Store at: -20°C
MW (kDa): 26

Overview

| | |
|------------------------------------|---|
| Product Name | TIMP1 antibody |
| Product Number | IR72-249 |
| Gene Description | TIMP metalloproteinase inhibitor 1 |
| Clonality | Polyclonal |
| Host | Rabbit |
| Species Reactivity | Human, Mouse, Rat |
| Recommended Applications Dilutions | Western Blot 1:500 – 1:1500 Immunofluorescence 1:100 – 1:300 Immunohistochemistry (Paraffin) 1:100 – 1:200 |
| Storage Buffer | 100mM Tris Glycine, 20% Glycerol (pH7). 0.025% ProClin 300 was added as a preservative |
| Concentration | 1.69 mg/ml |
| Purity | Affinity column purified |
| Storage | Store at +4°C for short term storage. Long time storage is recommended at -20°C |
| Notes | Gently mix before use. Optimal concentrations and conditions for each application should be determined by the user. |

IR72-249 anti-TIMP1 antibody WB image

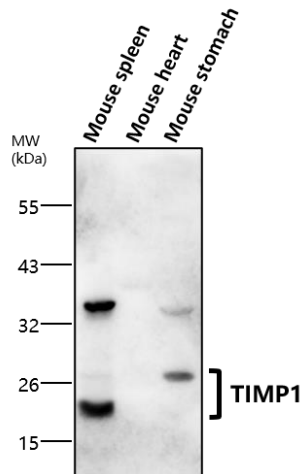
IR72-249 anti-TIMP1 antibody IHC image



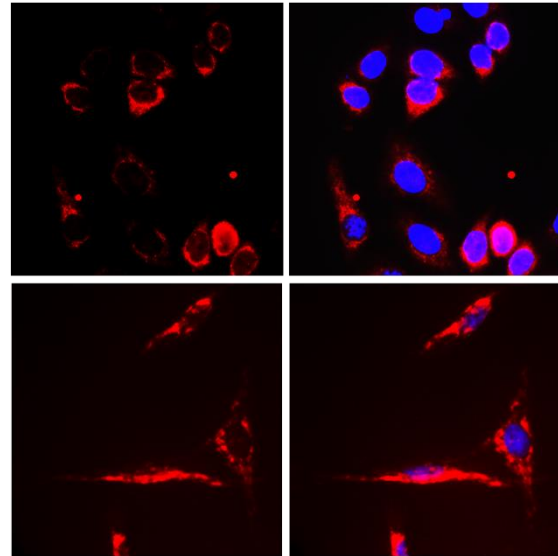
Anti-TIMP1 antibody at 1/1000 dilution.
Lysates at 40 μ g per lane. This blot was produced using a 12% SDS-PAGE. Nitrocellulose membrane was then blocked for an hour before being incubated with IR72-249 overnight at 4°C.

Immunohistochemical analysis of paraffin embedded Human cancer tissue labeling TIMP1 with IR72-249 at 1/100.

IR72-249 anti-TIMP1 antibody WB image



IR72-249 anti-TIMP1 antibody ICC/IF image



Anti-TIMP1 antibody at 1/1000 dilution.
Lysates at 40 µg per lane. This blot was produced using a 12% SDS-PAGE. Nitrocellulose membrane was then blocked for an hour before being incubated with IR72-249 overnight at 4°C.

Immunofluorescence: cells were fixed with 4% paraformaldehyde for 10 min at RT, permeabilized with 0.1% NP-40 for 10 min at RT then blocked with 5% BSA for 30 min at room temperature. Cells were stained with IR72-249 anti-TIMP1 antibody (red) at 1:200 and 4°C. DAPI (blue) was used as the nuclear counter stain.

