

Catalog Number: IR94-392

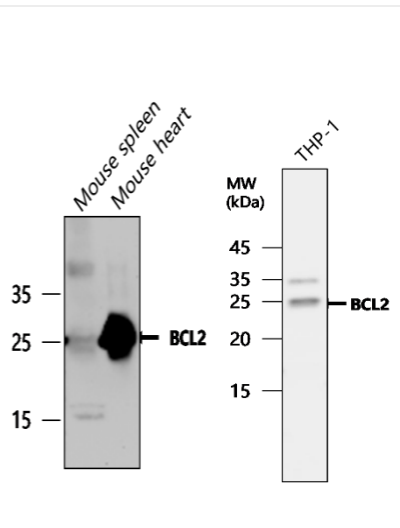
Anti-BCL2 antibody

Package size: 25, 100 μ l
Store at: -20°C
MW (kDa): 25-26

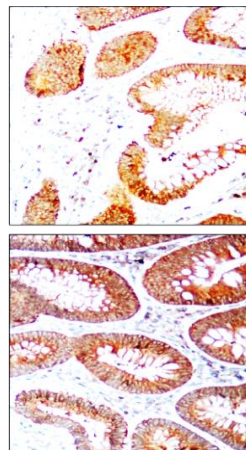
Overview

Product Name	BCL2 antibody
Product Number	IR94-392
Gene Description	B-cell CLL/lymphoma 2
Clonality	Polyclonal
Host	Rabbit
Species Reactivity	Human, mouse, rat
Recommended Applications Dilutions	Western Blot 1:500 – 1:1000 Immunofluorescence 1:200 – 1:500 Immunohistochemistry (Paraffin) 1:100 – 1:200
Storage Buffer	100mM Tris Glycine, 20% Glycerol (pH7). 0.025% ProClin 300 was added as a preservative
Concentration	1.09 mg/ml
Purity	Affinity column purified
Storage	Store at +4°C for short term storage. Long time storage is recommended at -20°C
Notes	Gently mix before use. Optimal concentrations and conditions for each application should be determined by the user.

IR94-392 anti-BCL2 antibody
WB image

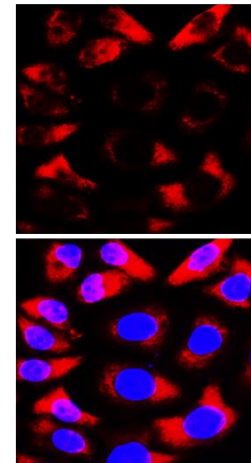


IR94-392 anti-BCL2 antibody
IHC image



Immunohistochemical analysis of paraffin embedded Human cancer tissue labeling BCL2 with IR94-392 at 1/100.

IR94-392 anti-BCL2 antibody
ICC/IF image



Cells were fixed with 4% PFA for 10 min at RT, permeabilized with 0.1% NP-40 for 10 min at RT then blocked with 5% BSA for 30 min at room temperature. Cells were stained with IR94-392 anti-BCL2 antibody (red) at 1:200 and 4°C.

Anti-BCL2 antibody at 1/1000 dilution
Lysates at 50 μ g per lane. This blot was produced using a 12% SDS-PAGE. Nitrocellulose membrane was then blocked for an hour before being incubated with IR94-392 overnight at 4°C.